

佳木斯三相异步防爆电机有限公司企业标准

ORS.460.005-2020

YBPT3 系列隔爆型变频调速 三相异步电动机（机座号 80~355） 产品样本

2020-10-01 发布

2020-12-01 实施

佳木斯三相异步防爆电机有限公司 发布

YBPT3 系列隔爆型变频调速三相异步电动机（机座号 80~355） 产品样本

1 概述

YBPT3 系列隔爆型变频调速三相异步电动机是我公司开发设计的分为自带风扇冷却和另配独立电源的冷却风机两种结构，效率指标符合 GB 18613-2020《中小型三相异步电动机能效限定值及能效等级》中 3 级电动机节能评价价值的规定。

本系列电动机符合国家标准 GB 3836.1《爆炸性环境 第 1 部分：设备通用要求》和 GB 3836.2《爆炸性环境第 2 部分：由隔爆外壳“d”保护的的设备》的规定。

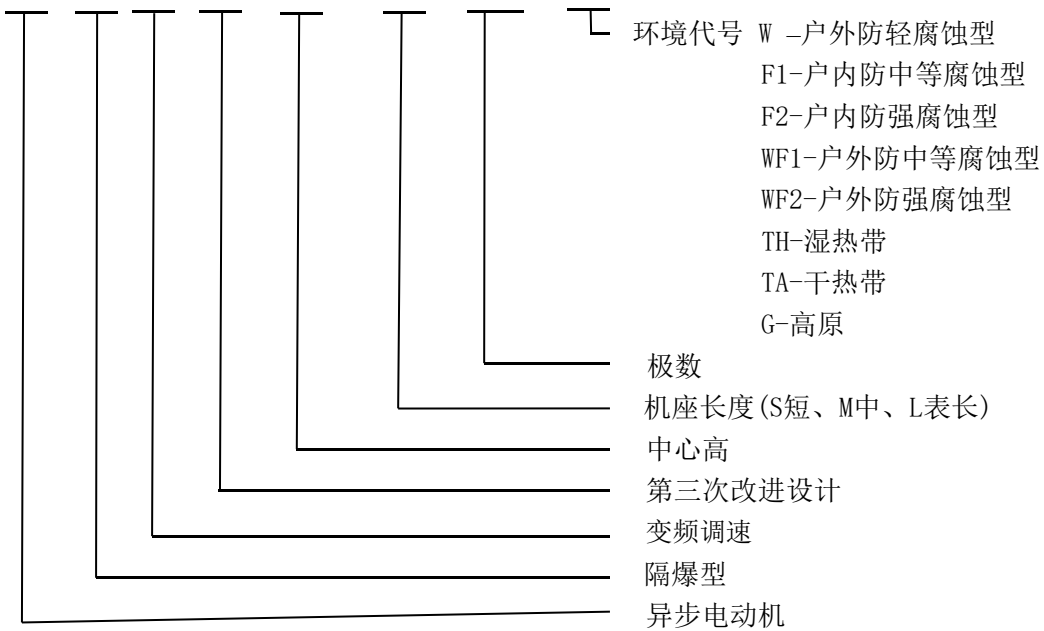
本系列电动机制成隔爆型，适用于爆炸性气体环境中机械设备的电力驱动。II 类：除煤矿外的其它爆炸性气体环境，防爆标志为 ExdIIAT (1-4) Gb, ExdIIBT (1-4) Gb, ExdIICT (1-4) Gb, ExdIGb, 温度组别为 T1、T2、T3、T4。功率等级和安装尺寸符合 GB/T4772.1 和 GB/T4772.2。

2 产品结构特点

- a) 电动机主接线盒位于机座的顶部，可以左右旋转满足用户不同出线方式的要求；
- b) 机座号 H160 及以上电机，可以根据用户需要提供定子测温装置、轴承测温装置、加热器、不停机注排油装置；
- c) 机座号 225 及以上电机，可根据用户需要提供底脚调整螺栓孔；
- d) 接线盒、机座、端盖和风罩的外形美观、样式新颖，并且有利于降噪和通风；
- e) 电动机采用热分级为 155 级（可选 180 级）绝缘系统，从而延长电机的使用寿命；
- f) 电动机工作制为 S1，冷却方式为 IC411 或 IC416，外壳防护等级为 IP54 或 IP55；
- g) 适用于各种应用场合，如：“W”、“TH”、“WTH”、“F1”、“F2”、“WF1”及“WF2”，其中：W 为户外防轻腐蚀型；TH 为湿热带；WTH 为户外湿热带；F1 为户内防中等防腐型；F2 为户内防强腐蚀型；WF1 为户外防中等腐蚀型；WF2 为户外防强腐蚀型；
- h) 为了方便连接负载，在电动机轴伸端面均预留有 C 型中心孔；
- i) 电动机机座底部安装有防爆呼吸排水阀（卧式安装方式时）；
- j) 具有优良的起动特性；
- k) 电动机具有较高的运行可靠性。

3 电动机型号定义电动机产品型号见示例：

Y B PT 3 160 L - 4 - W



4 产品机座号与转速及功率的关系

电动机产品机座号与转速及功率的关系(见表1)。

表1 产品机座号与转速及功率的关系

| 机座号 | 同步转速 r/min | | | | |
|-------|---------------|------|------|------|-----|
| | 3000 | 1500 | 1000 | 750 | 600 |
| | 功率 kW | | | | |
| 80M1 | 0.75 | 0.55 | 0.37 | 0.18 | — |
| 80M2 | 1.1 | 0.75 | 0.55 | 0.25 | |
| 90S | 1.5 | 1.1 | 0.75 | 0.37 | |
| 90L | 2.2 | 1.5 | 1.1 | 0.55 | |
| 100L1 | 3 | 2.2 | 1.5 | 0.75 | |
| 100L2 | | 3 | | 1.1 | |
| 112M | 4 | 4 | 2.2 | 1.5 | |
| 132S1 | 5.5 | 5.5 | 3 | 2.2 | |
| 132S2 | 7.5 | | | | |
| 132M1 | — | 7.5 | 4 | 3 | |
| 132M2 | | | 5.5 | | |
| 160M1 | 11 | 11 | 7.5 | 4 | |
| 160M2 | 15 | | | 5.5 | |
| 160L | 18.5 | 15 | 11 | 7.5 | |

表1 产品系列型谱 (续)

| 机座号 | 同步转速 r/min | | | | |
|-------|---------------|-------|-------|-------|-------|
| | 3000 | 1500 | 1000 | 750 | 600 |
| | 功率 kW | | | | |
| 180M | 22 | 18.5 | - | - | |
| 180L | - | 22 | 15 | 11 | |
| 200L1 | 30 | 30 | 18.5 | 15 | |
| 200L2 | 37 | | 22 | | |
| 225S | - | 37 | - | 18.5 | |
| 225M | 45 | 45 | 30 | 22 | |
| 250M | 55 | 55 | 37 | 30 | |
| 280S | 75 | 75 | 45 | 37 | |
| 280M | 90 | 90 | 55 | 45 | |
| 315S | 110 | 110 | 75 | 55 | 45 |
| 315M | 132 | 132 | 90 | 75 | 55 |
| 315L1 | 160 | 160 | 110 | 90 | 75 |
| 315L2 | 200 | 200 | 132 | 110 | 90 |
| 355S1 | (185) | (185) | 160 | 132 | (90) |
| 355S2 | (200) | (200) | | | |
| 355M1 | (220) | (220) | (185) | 160 | 110 |
| 355M2 | 250 | 250 | 200 | | 132 |
| 355L1 | (280) | (280) | (220) | (185) | 160 |
| 355L2 | 315 | 315 | 250 | 200 | (185) |

注：带（）为不推荐的规格。

5 执行标准

GB/T 156-2007 标准电压

GB/T 755 旋转电机 定额和性能

GB/T 997-2008 旋转电机结构型式、安装型式及接线盒位置的分类

GB/T 1032-2012 三相异步电动机试验方法

GB/T 1971-2006 旋转电机 线端标志与旋转方向

GB/T 1993-1993 旋转电机 冷却方法

GB 3836.1-2010 爆炸性环境 第1部分：设备通用要求

GB 3836.2-2010 爆炸性环境 第2部分：由隔爆外壳“d”保护的的设备

GB/T 4772.1-1999 旋转电动机尺寸和输出功率等级 第1部分：机座号56~400和凸缘号55~1080

GB/T 4942.1-2006 旋转电机整体结构的防护等级（IP代码）分级

GB/T 10068-2008 轴中心高为56 mm及以上电动机的机械振动 振动的测量、评定及限值

GB/T 10069.3-2008 旋转电机 噪声测定方法及限值 第3部分：噪声限值

GB 11021-2007 电气绝缘耐热性分级

GB 18613-2012 中小型三相异步电动机能效限定值及能效等级

6 工作条件

- a) 温度：环境空气温度随季节而变化，但最高环境温度不超过40℃，最低环境空气温度为-20℃；
- b) 海拔：不超过1000m；
- 注：当环境空气温度、海拔与上述规定不同时按GB/T 755规定；
- c) 湿度：最湿月月平均最高相对湿度为90%，同时该月月平均最低温度不高于25℃。
- d) 额定频率：50Hz；
- e) 额定电压：380V、660V、380/660V、1140V、660/1140V。
- f) 变频范围：2P变频范围3Hz~50Hz，4P变频范围3Hz~100Hz (315-4P、355-4P变频范围3Hz~70Hz)
- 注：对频率、电压、环境空气温度、海拔等有特殊要求时，请在订货时提出。

7 安装结构型式

本系列电动机有三种基本安装结构型式及十一种派生安装结构型式，（见表2）。

表2 安装结构形式及是一种派生安装结构形式

| 型号 | 基本安装结构 | | | 派生的安装型式 | | | | | | | | | | | |
|-----------------|--------|-------|------|---------|------|-------|------|------|------|------|------|----------|-------|-------|---|
| | IMB3 | IMB35 | IMB5 | 采用IMB5型 | | | IMB3 | | | | | 采用IMB35型 | | | |
| | | | | IMV1 | IMV3 | IMV18 | IMV5 | IMV6 | IMB6 | IMB7 | IMB8 | IMV15 | IMV35 | IMV37 | |
| YBPT3 80 ~ 112 | √ | √ | √ | √ | √ | √ | √ | √ | √ | √ | √ | √ | √ | √ | √ |
| YBPT3 132 ~ 160 | √ | √ | √ | √ | √ | √ | √ | √ | √ | √ | √ | √ | √ | √ | √ |
| YBPT3 180 ~ 280 | √ | √ | √ | √ | — | √ | — | — | — | — | — | — | — | — | — |
| YBPT3 315 ~ 355 | √ | √ | — | √ | — | √ | — | — | — | — | — | — | — | — | — |

当额定电压为380V/660V或660V/1140V时，660V或1140V为Y接法，380V或660V为Δ接法，接线指示图(见图1)。

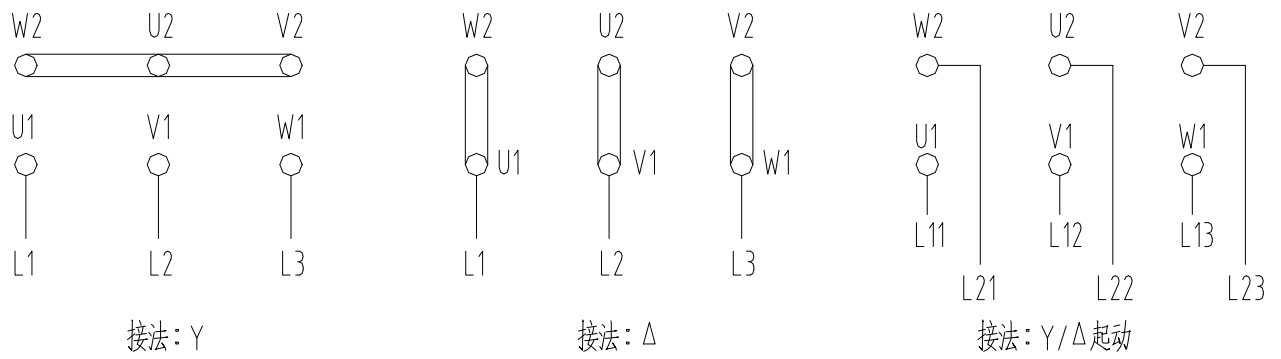
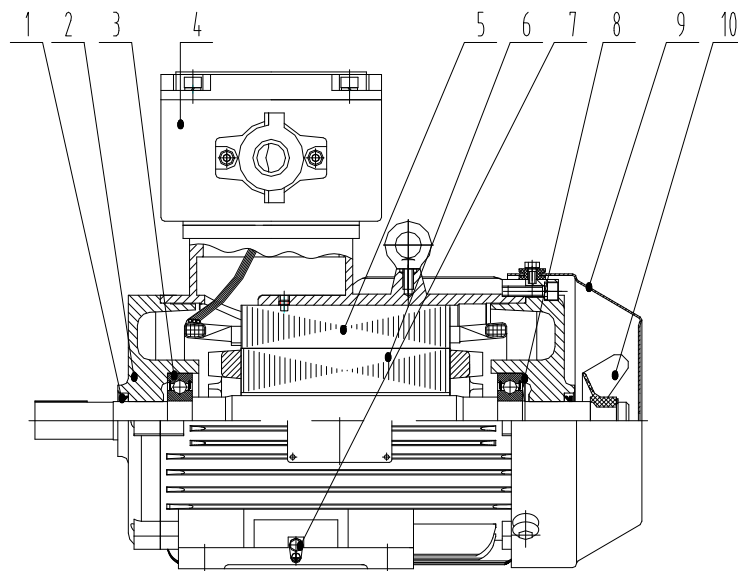


图1 接线指示图

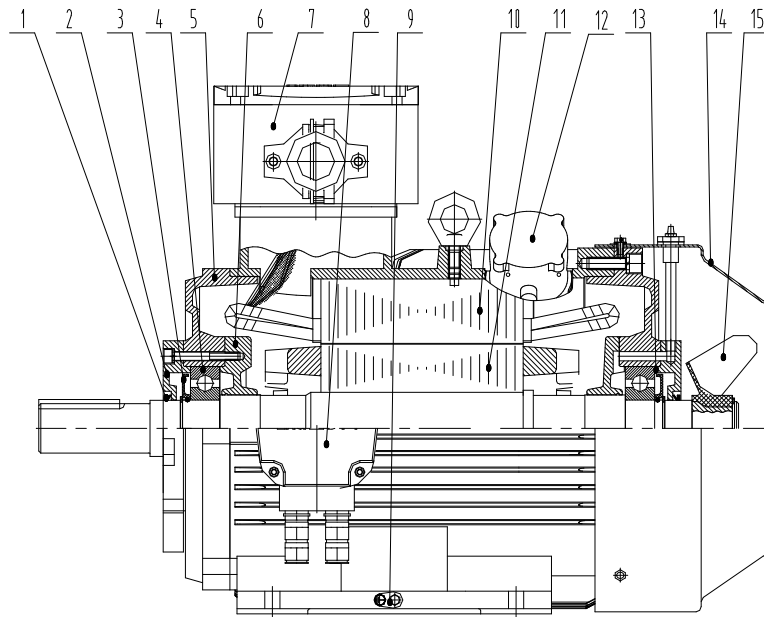
8 电动机结构示意图

结构剖面示意图 (见图 2~图 7)。



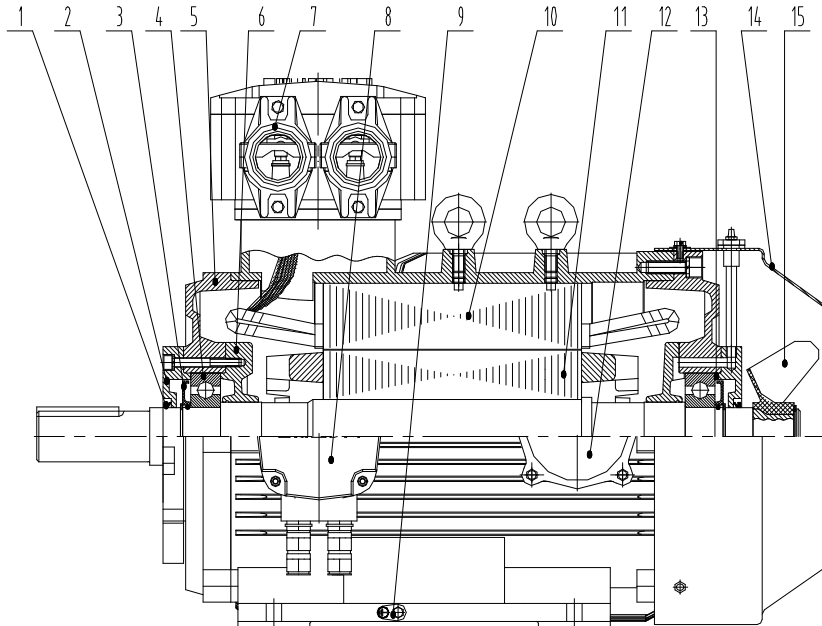
- | | | | | |
|--------|--------|---------|-------|-------|
| 1—轴面油封 | 2—端盖 | 3—轴承 | 4—接线盒 | 5—定子 |
| 6—转子 | 7—接地螺栓 | 8—波形弹簧片 | 9—风罩 | 10—风扇 |

图2 YBPT3 80~132 IC411 结构剖面示意图



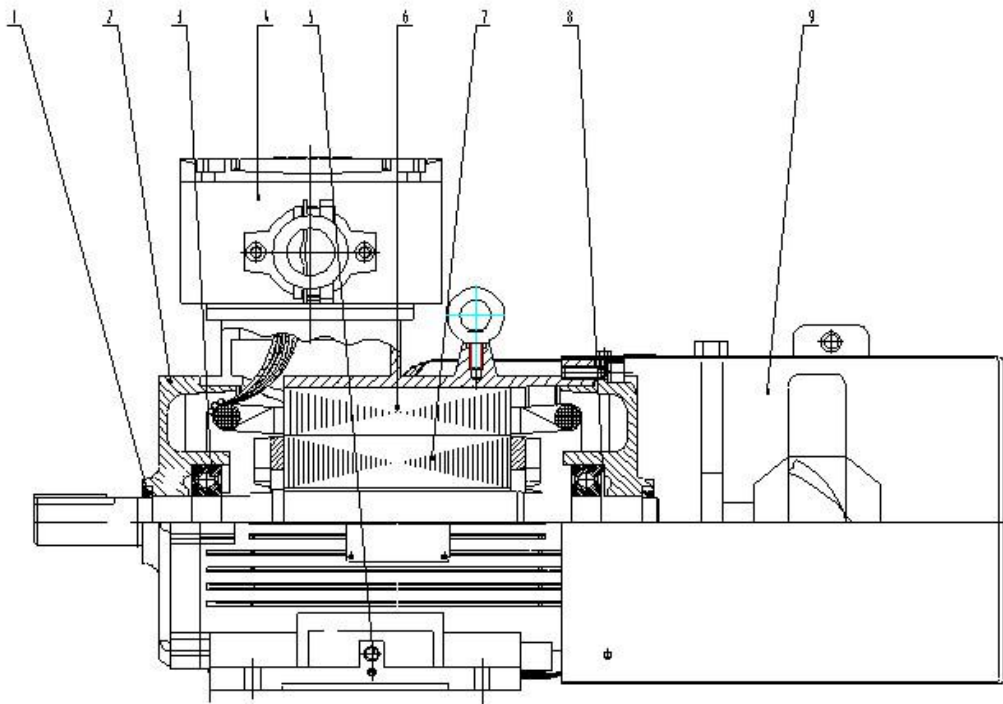
- | | | | | |
|--------|------------|-----------|--------|-------|
| 1—轴面油封 | 2—轴承外盖 | 3—挡油环 | 4—轴承 | 5—端盖 |
| 6—轴承内盖 | 7—接线盒 | 8—定子测温接线盒 | 9—接地螺栓 | 10—定子 |
| 11—转子 | 12—轴承测温接线盒 | 13—波形弹簧片 | 14—风罩 | 15—风扇 |

图3 YBPT3 160~280 IC411 结构剖面示意图



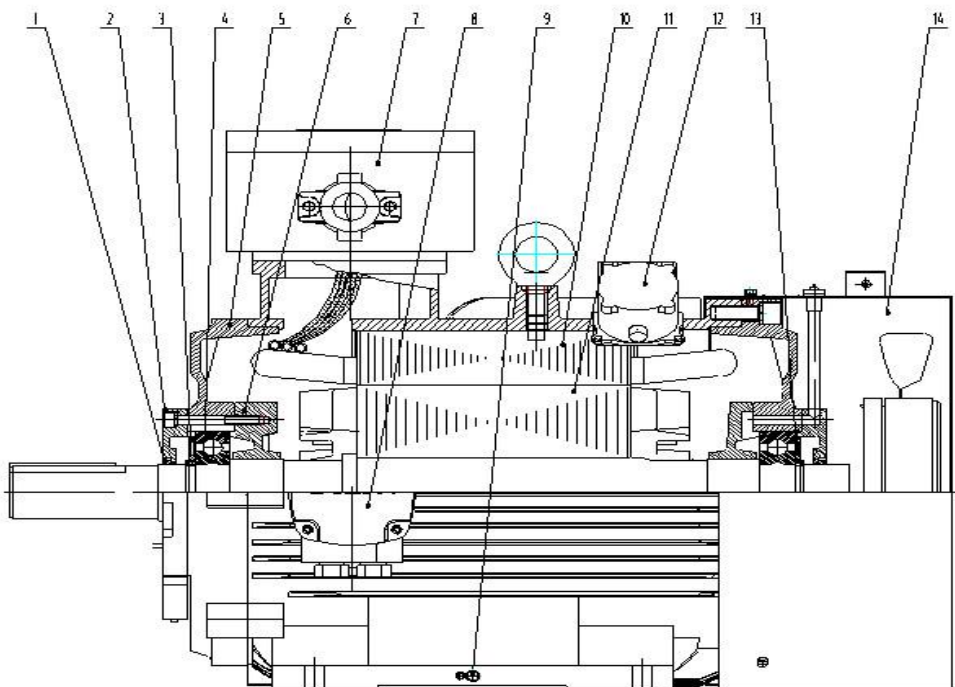
- | | | | | |
|--------|------------|-----------|--------|-------|
| 1—轴面油封 | 2—轴承外盖 | 3—挡油环 | 4—轴承 | 5—端盖 |
| 6—轴承内盖 | 7—接线盒 | 8—定子测温接线盒 | 9—接地螺栓 | 10—定子 |
| 11—转子 | 12—轴承测温接线盒 | 13—波形弹簧片 | 14—风罩 | 15—风扇 |

图4 YBPT3 315~355 IC411 结构剖面示意图



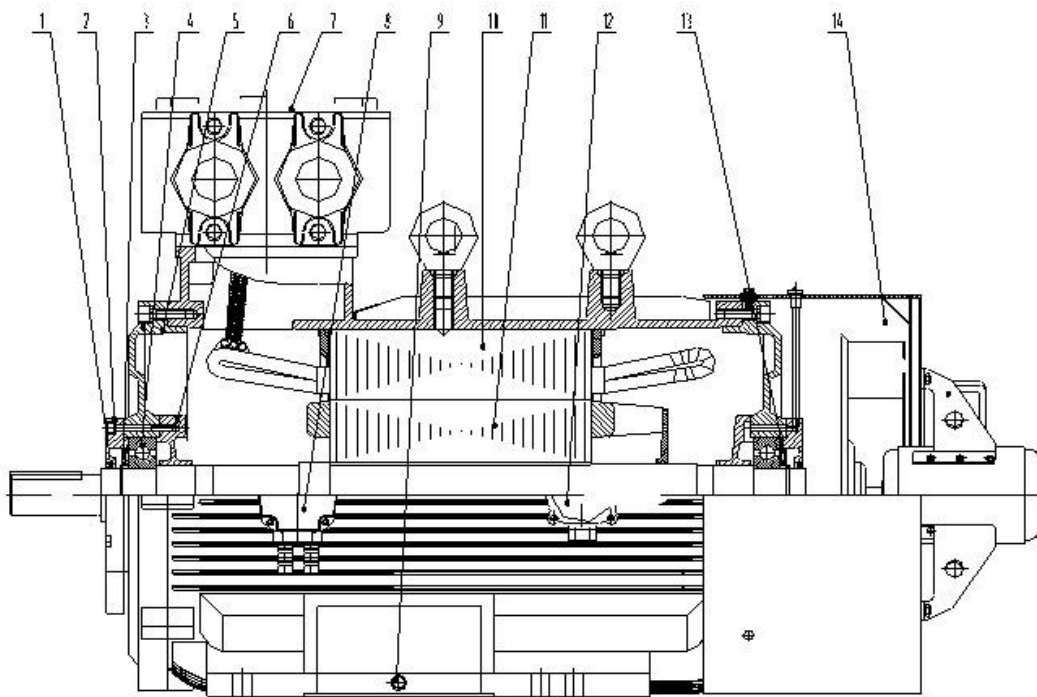
- 1-轴面油封 2-端盖 3-轴承 4-接线盒 5-接地螺栓 6-定子 7-转子
8-波形弹簧片 9-风机

图5 YBPT3 80~132 IC416 结构剖面示意图



- 1-轴面油封 2-轴承外盖 3-甩油盘 4-轴承 5-端盖 6-轴承外盖 7-接线盒 8-测温接线盒
9-接地螺栓 10-定子 11-转子 12-轴承测温接线盒 13-波形弹簧片 14-风机

图6 YBPT3 160~250 IC416 结构剖面示意图



1-轴面油封 2-轴承外盖 3-甩油盘 4-轴承 5-端盖 6-轴承外盖 7-接线盒 8-测温接线盒
9-接地螺栓 10-定子 11-转子 12-轴承测温接线盒 13-波形弹簧片 14-风机

图 7 YBPT3 280~355 IC416 结构剖面示意图

9 产品性能数据

380V/50Hz 产品性能数据(见表 3)。

表 3 产品性能数据

| 产品型号 | 额定功率 kW | 额定转速 r/min | 额定电流 A | 堵转电流/额定电流 | 效率 % | 功率因数 cos φ | 额定转矩 N·m | 堵转转矩/额定转矩 | 最大转矩/额定转矩 | 转动惯量 kgm ² | 净重 kg |
|-------------------------|---------|------------|--------|-----------|------|------------|----------|-----------|-----------|-----------------------|-------|
| 同 步 转 速 3000 r/min (2P) | | | | | | | | | | | |
| YBPT3 80M1-2 | 0.75 | 2850 | 1.8 | 6.8 | 77.4 | 0.83 | 2.4 | 2.2 | 2.3 | 0.0010 | 33 |
| YBPT3 80M2-2 | 1.1 | 2852 | 2.5 | 7.3 | 79.6 | | 3.5 | | | 0.0014 | 34 |
| YBPT3 90S-2 | 1.5 | 2866 | 3.7 | 7.6 | 81.3 | 0.84 | 4.8 | | | 0.0020 | 42 |
| YBPT3 90L-2 | 2.2 | 2868 | 4.8 | 7.8 | 83.2 | 0.85 | 7.0 | | | 0.0026 | 45 |
| YBPT3 100L-2 | 3 | 2892 | 6.2 | 8.1 | 84.6 | 0.87 | 9.6 | | | 0.0036 | 57 |
| YBPT3 112M-2 | 4 | 2914 | 8.1 | 8.3 | 85.8 | 0.88 | 12.7 | | | 0.0068 | 67 |
| YBPT3 132S1-2 | 5.5 | 2922 | 10.9 | 8.0 | 87.0 | | 17.5 | | | 0.0120 | 87 |
| YBPT3 132S2-2 | 7.5 | 2925 | 14.5 | 7.8 | 88.1 | 0.89 | 23.9 | | | 0.0139 | 91 |
| YBPT3 160M1-2 | 11 | 2944 | 21.0 | 7.9 | 89.4 | | 35.0 | | | 0.0461 | 132 |
| YBPT3 160M2-2 | 15 | | 28.4 | 8.0 | 90.3 | | 47.8 | | | 0.0567 | 140 |
| YBPT3 160L-2 | 18.5 | | 2945 | 34.7 | 8.1 | | 90.9 | 58.9 | 0.0673 | 155 | |

| | | | | | | | | | | | |
|---------------|-------|------|-------|------|-------|--------|--------|-----|--------|--------|------|
| YBPT3 180M-2 | 22 | 2964 | 41.1 | 8.2 | 91.3 | | 70.0 | | | 0.0956 | 241 |
| YBPT3 200L1-2 | 30 | 2969 | 55.7 | 7.5 | 92.0 | | 95.5 | 2.0 | | 0.1486 | 299 |
| YBPT3 200L2-2 | 37 | | 68.3 | | 92.5 | | 117.8 | | | 0.1741 | 315 |
| YBPT3 225M-2 | 45 | 2974 | 82.7 | 7.6 | 92.9 | | 143.3 | | | 0.2704 | 365 |
| YBPT3 250M-2 | 55 | | 100.8 | | 93.2 | | 175.1 | 2.1 | 0.3738 | 477 | |
| YBPT3 280S-2 | 75 | 2977 | 136.5 | 6.9 | 93.8 | | 238.8 | 2.0 | | 0.5885 | 595 |
| YBPT3 280M-2 | 90 | | 163.3 | 7.0 | 94.1 | | 286.5 | | | 0.6915 | 635 |
| YBPT3 315S-2 | 110 | 2978 | 196.9 | 7.1 | 94.3 | 0.90 | 350.2 | 1.8 | 2.2 | 1.3539 | 1067 |
| YBPT3 315M-2 | 132 | | 235.6 | | 94.6 | | 420.2 | | | 1.4949 | 1165 |
| YBPT3 315L1-2 | 160 | | 281.8 | | 94.8 | 509.3 | 1.6923 | | | 1210 | |
| YBPT3 315L2-2 | 200 | | 351.1 | | 95.0 | 636.7 | 1.9180 | | | 1315 | |
| YBPT3 355S1-2 | (185) | 2986 | 325.1 | 95.0 | 94.9 | 0.91 | 588.9 | 1.6 | 2.2 | 2.3164 | 1524 |
| YBPT3 355S2-2 | (200) | | 351.5 | | 636.7 | | 2.6305 | | | 1609 | |
| YBPT3 355M1-2 | (220) | | 386.7 | | 700.3 | | 2.6305 | | | 1609 | |
| YBPT3 355M2-2 | 250 | | 439.4 | | 795.8 | | 3.1409 | | | 1717 | |
| YBPT3 355L1-2 | (280) | | 492.1 | | 891.3 | 3.1409 | 1812 | | | | |
| YBPT3 355L2-2 | 315 | | 554 | | 1003 | 3.7691 | 1980 | | | | |

注：带（）为不推荐的规格。

表3 产品性能数据（续）

| 产品型号 | 额定功率 kW | 额定转速 r/min | 额定电流 A | 堵转 电流 额定 电流 | 效率 % | 功率 因数 cos φ | 额定 转矩 N·m | 堵转 转矩 额定 转矩 | 最大 转矩 额定 转矩 | 转动 惯量 kgm ² | 净重 kg |
|-------------------------|------------|---------------|-----------|----------------------|---------|-------------------|-----------------|----------------------|----------------------|------------------------------|----------|
| 同 步 转 速 1500 r/min (4P) | | | | | | | | | | | |
| YBPT3 80M1-4 | 0.55 | 1430 | 1.4 | 6.3 | 79.6 | 0.75 | 3.5 | 2.3 | 2.3 | 0.0020 | 33 |
| YBPT3 80M2-4 | 0.75 | | 1.9 | 6.5 | 79.6 | | 4.8 | | | 0.0025 | 34 |
| YBPT3 90S-4 | 1.1 | | 2.7 | 6.6 | 81.4 | | 7.0 | | | 0.0031 | 42 |
| YBPT3 90L-4 | 1.5 | | 3.7 | 6.9 | 82.8 | | 9.6 | | | 0.0041 | 45 |
| YBPT3 100L1-4 | 2.2 | 1452 | 4.9 | 7.5 | 84.3 | 0.81 | 14.0 | 2.0 | 2.3 | 0.0099 | 56 |
| YBPT3 100L2-4 | 3 | | 6.5 | 7.6 | 85.5 | 19.1 | 0.0130 | | | 60 | |
| YBPT3 112M-4 | 4 | | 8.6 | 7.7 | 86.6 | 25.5 | 0.0150 | | | 74 | |
| YBPT3 132S-4 | 5.5 | | 11.6 | 7.5 | 87.7 | 35.0 | 0.0327 | | | 92 | |
| YBPT3 132M-4 | 7.5 | | 15.5 | 7.4 | 88.7 | 0.83 | 47.8 | | | 0.0412 | 102 |
| YBPT3 160M-4 | 11 | 1473 | 21.9 | 7.5 | 89.8 | 0.85 | 70.0 | 2.2 | 2.2 | 0.0917 | 138 |
| YBPT3 160L-4 | 15 | | 29.2 | | 90.6 | 95.5 | 0.1153 | | | 150 | |
| YBPT3 180M-4 | 18.5 | | 35.8 | 7.7 | 91.2 | 0.86 | 117.8 | | | 0.1555 | 235 |
| YBPT3 180L-4 | 22 | | 42.4 | 7.8 | 91.6 | | 140.1 | | | 0.1814 | 250 |
| YBPT3 200L-4 | 30 | | 57.4 | 7.2 | 92.3 | | 191.0 | | | 0.3163 | 324 |

| | | | | | | | | | | | |
|---------------|-------|------|------|-----|------|------|--------|------|-----|--------|------|
| YBPT3 225S-4 | 37 | 1481 | 70.5 | 7.3 | 92.7 | 0.88 | 235.6 | 2.1 | 2.2 | 0.5361 | 355 |
| YBPT3 225M-4 | 45 | | 85.4 | 7.4 | 93.1 | | 286.5 | | | 0.6382 | 384 |
| YBPT3 250M-4 | 55 | | 104 | | 93.5 | | 350.2 | | | 0.7089 | 494 |
| YBPT3 280S-4 | 75 | 1488 | 138 | 6.7 | 94.0 | 0.88 | 477.5 | 2.1 | 2.2 | 1.5151 | 640 |
| YBPT3 280M-4 | 90 | | 165 | 6.9 | 94.2 | | 573.0 | | | 1.8868 | 705 |
| YBPT3 315S-4 | 110 | 1490 | 201 | 6.9 | 94.5 | 0.89 | 700.3 | 2.1 | 2.2 | 3.1223 | 1087 |
| YBPT3 315M-4 | 132 | | 241 | | 94.7 | | 840.4 | | | 3.4928 | 1261 |
| YBPT3 315L1-4 | 160 | | 288 | | 94.9 | | 1019 | | | 3.9161 | 1270 |
| YBPT3 315L2-4 | 200 | | 359 | | 95.1 | 1273 | 5.3456 | 1370 | | | |
| YBPT3 355S1-4 | (185) | | 332 | | 95.0 | 1178 | 4.9795 | 1582 | | | |
| YBPT3 355S2-4 | (200) | | 359 | | 95.1 | 1273 | 5.3456 | 1582 | | | |
| YBPT3 355M1-4 | (220) | | 391 | | 95.1 | 1401 | 6.0046 | 1705 | | | |
| YBPT3 355M2-4 | 250 | | 444 | | 95.1 | 1591 | 6.5172 | 1764 | | | |
| YBPT3 355L1-4 | (280) | | 492 | | 95.1 | 1782 | 7.3227 | 1947 | | | |
| YBPT3 355L2-4 | 315 | | 559 | | 95.1 | 2005 | 8.2015 | 2084 | | | |

注：带（）为不推荐的规格。

表3 产品性能数据（续）

| 产品型号 | 额定功率 kW | 额定转速 r/min | 额定电流 A | 堵转电流/额定电流 | 效率 % | 功率因数 cos φ | 额定转矩 N·m | 堵转转矩/额定转矩 | 最大转矩/额定转矩 | 转动惯量 kgm ² | 净重 kg |
|-------------------------|---------|------------|--------|-----------|------|------------|----------|-----------|-----------|-----------------------|-------|
| 同 步 转 速 1000 r/min (6P) | | | | | | | | | | | |
| YBPT3 80M1-6 | 0.37 | 926 | 1.3 | 4.7 | 62.0 | 0.70 | 3.5 | 1.9 | 2.1 | 0.0021 | 33 |
| YBPT3 80M2-6 | 0.55 | 928 | 1.6 | | 74.7 | 0.72 | 5.3 | | | 0.0035 | 34 |
| YBPT3 90S-6 | 0.75 | 933 | 2.1 | 5.8 | 75.9 | 0.74 | 7.2 | 2.1 | 2.1 | 0.0043 | 41 |
| YBPT3 90L-6 | 1.1 | | 2.93 | 5.9 | 78.1 | | 10.5 | | | 0.0056 | 44 |
| YBPT3 100L-6 | 1.5 | 936 | 3.9 | 6.0 | 79.8 | 0.74 | 14.3 | 2.1 | 2.1 | 0.0094 | 55 |
| YBPT3 112M-6 | 2.2 | 959 | 5.6 | | 81.8 | | 21.0 | | | 0.0155 | 68 |
| YBPT3 132S-6 | 3 | 974 | 7.4 | 6.2 | 83.3 | 0.75 | 28.7 | 2.0 | 2.1 | 0.0324 | 82 |
| YBPT3 132M1-6 | 4 | | 9.7 | 6.8 | 84.6 | | 38.2 | | | 0.0410 | 90 |
| YBPT3 132M2-6 | 5.5 | | 13.0 | 7.1 | 86.0 | | 52.5 | | | 0.0529 | 97 |
| YBPT3 160M-6 | 7.5 | 978 | 16.8 | 6.7 | 87.2 | 0.78 | 71.6 | 2.1 | 2.1 | 0.1009 | 129 |
| YBPT3 160L-6 | 11 | 979 | 23.9 | 6.9 | 88.7 | 0.79 | 105.1 | | | 0.1346 | 150 |
| YBPT3 180L-6 | 15 | 983 | 31.4 | 7.2 | 89.7 | 0.81 | 143.3 | 2.0 | 2.1 | 0.2390 | 236 |
| YBPT3 200L1-6 | 18.5 | 985 | 38.4 | | 90.4 | | 176.7 | | | 0.3489 | 289 |
| YBPT3 200L2-6 | 22 | | 44.8 | 7.3 | 90.9 | 210.1 | 0.4087 | 303 | | | |
| YBPT3 225M-6 | 30 | 987 | 61.4 | 7.1 | 91.7 | 0.81 | 286.5 | 2.0 | 2.1 | 0.6525 | 355 |

| | | | | | | | | | | | |
|---------------|-------|-----|-------|-----|------|------|-------|-----|-----|--------|------|
| YBPT3 250M-6 | 37 | 988 | 72.6 | | 92.2 | 0.84 | 353.4 | 2.1 | | 0.8949 | 470 |
| YBPT3 280S-6 | 45 | 991 | 85.8 | 7.2 | 92.7 | 0.86 | 429.8 | | | 1.6695 | 585 |
| YBPT3 280M-6 | 55 | 992 | 104.4 | | 93.1 | | 525.3 | | | 1.9875 | 620 |
| YBPT3 315S-6 | 75 | 993 | 143.1 | | 93.7 | 0.85 | 716.3 | 2.0 | | 3.6566 | 1050 |
| YBPT3 315M-6 | 90 | | 173.2 | | 94.0 | 0.84 | 859.5 | | | 4.1488 | 1189 |
| YBPT3 315L1-6 | 110 | 994 | 208.5 | 7.0 | 94.3 | 0.85 | 1051 | | 2.0 | 5.0630 | 1280 |
| YBPT3 315L2-6 | 132 | | 246.6 | | 94.6 | 0.86 | 1261 | | | 5.6255 | 1334 |
| YBPT3 355S-6 | 160 | | 295 | | 94.8 | | 1528 | | 1.9 | 11.640 | 1645 |
| YBPT3 355M1-6 | (185) | | 340 | | 94.9 | | 1767 | | | 12.513 | 1685 |
| YBPT3 355M2-6 | 200 | 995 | 368 | | 95.0 | | 1910 | | | 13.386 | 1779 |
| YBPT3 355L1-6 | (220) | | 404 | | | | 2149 | | | 15.132 | 1922 |
| YBPT3 355L2-6 | 250 | | 460 | | | | 2388 | | | 16.878 | 2053 |

注：带（）为不推荐的规格。

表3 产品性能数据（续）

| 产品型号 | 额定功率 kW | 额定转速 r/min | 额定电流 A | 堵转 电流 / 额定 电流 | 效率 % | 功率 因数 cos φ | 额定 转矩 N·m | 堵转 转矩 / 额定 转矩 | 最大 转矩 / 额定 转矩 | 转动 惯量 kgm ² | 净重 kg |
|------------------------|------------|---------------|-----------|---------------------------|---------|-------------------|-----------------|---------------------------|---------------------------|------------------------------|----------|
| 同 步 转 速 750 r/min (8P) | | | | | | | | | | | |
| YBPT3 80M1-8 | 0.18 | 650 | 0.92 | 3.3 | 48.9 | 0.61 | 2.3 | | 1.9 | 0.0027 | 33 |
| YBPT3 80M2-8 | 0.25 | | 1.21 | | 51.4 | | 3.2 | | | 0.0033 | 34 |
| YBPT3 90S-8 | 0.37 | 670 | 1.66 | 4.0 | 55.5 | 0.62 | 4.7 | 1.8 | | 0.0043 | 41 |
| YBPT3 90L-8 | 0.55 | | 2.22 | | 61.7 | 0.63 | 7.0 | | | 0.0056 | 44 |
| YBPT3 100L1-8 | 0.75 | 690 | 2.48 | 5.0 | 68.6 | 0.67 | 9.6 | | 2.0 | 0.0068 | 51 |
| YBPT3 100L2-8 | 1.1 | | 3.43 | | 70.6 | 0.69 | 14.0 | | | 0.0094 | 54 |
| YBPT3 112M-8 | 1.5 | 710 | 4.51 | 6.0 | 72.6 | 0.70 | 19.1 | | | 0.0140 | 62 |
| YBPT3 132S-8 | 2.2 | | 6.07 | | 77.6 | 0.71 | 28.0 | | | 0.0307 | 89 |
| YBPT3 132M-8 | 3.0 | | 7.94 | | 78.6 | 0.73 | 38.2 | | | 0.0410 | 95 |
| YBPT3 160M1-8 | 4.0 | 720 | 10.45 | 6.0 | 79.6 | | 50.9 | | | 0.0635 | 120 |
| YBPT3 160M2-8 | 5.5 | | 13.8 | | 81.7 | 0.74 | 70.0 | 0.0897 | 132 | | |
| YBPT3 160L-8 | 7.5 | 730 | 18.1 | 6.5 | 84.1 | 0.75 | 95.5 | 1.9 | | 0.1271 | 155 |
| YBPT3 180L-8 | 11 | | 25.9 | | 86.2 | | 140.1 | | | 0.2076 | 221 |
| YBPT3 200L-8 | 15 | | 34.5 | | 86.8 | 0.76 | 191.0 | | | 0.3589 | 280 |
| YBPT3 225S-8 | 18.5 | 740 | 41.7 | 6.6 | 88.7 | | 235.6 | | | 0.5212 | 330 |
| YBPT3 225M-8 | 22 | | 48 | | 89.3 | 0.78 | 280.1 | 0.5863 | 350 | | |

| | | | | | | | | | | | |
|---------------|-----|-----|-------|-----|------|-------|--------|------|------|--------|------|
| YBPT3 250M-8 | 30 | 742 | 64.3 | 6.5 | 89.8 | 0.79 | 382.0 | 1.9 | | 0.9420 | 472 |
| YBPT3 280S-8 | 37 | | 78.7 | 6.6 | 90.4 | | 471.1 | | | 1.5105 | 580 |
| YBPT3 280M-8 | 45 | | 95.2 | | 90.9 | | 573.0 | | | 1.8683 | 630 |
| YBPT3 315S-8 | 55 | | 112.4 | 6.2 | 91.8 | 700.3 | 3.7947 | 975 | | | |
| YBPT3 315M-8 | 75 | | 152.1 | | 92.5 | 955.0 | 5.1972 | 1149 | | | |
| YBPT3 315L1-8 | 90 | | 179.9 | 6.4 | 92.7 | 0.82 | 1146 | 1.8 | | 6.2696 | 1235 |
| YBPT3 315L2-8 | 110 | | 219.4 | | 92.9 | | 1400 | | | 7.3420 | 1335 |
| YBPT3 355S-8 | 132 | | 263 | | 93.0 | | 1680 | | | 11.661 | 1630 |
| 0YBPT3 355M-8 | 160 | | 318 | | 93.3 | | 2037 | | | 13.993 | 1762 |
| YBPT3 355L1-8 | 185 | | 366 | | 93.6 | | 2356 | | | 14.576 | 1880 |
| YBPT3 355L2-8 | 200 | 391 | 93.7 | | 2547 | | 17.200 | | 2026 | | |

注：带（）为不推荐的规格。

表3 产品性能数据（续）

| 产品型号 | 额定功率 kW | 额定转速 r/min | 额定电流 A | 堵转 电流 / 额定 电流 | 效率 % | 功率 因数 cos φ | 额定 转矩 N·m | 堵转 转矩 / 额定 转矩 | 最大 转矩 / 额定 转矩 | 转动 惯量 kgm ² | 净重 kg | | |
|-------------------------|------------|---------------|-----------|---------------------------|---------|-------------------|-----------------|---------------------------|---------------------------|------------------------------|----------|--------|------|
| 同 步 转 速 600 r/min (10P) | | | | | | | | | | | | | |
| YBPT3 315S-10 | 45 | 590 | 99.6 | 6.0 | 91.5 | 0.75 | 716.3 | 1.5 | 2.0 | 3.7947 | 958 | | |
| YBPT3 315M-10 | 55 | | 121.1 | | | | 92.0 | | | 875.4 | 4.6197 | 1080 | |
| YBPT3 315L1-10 | 75 | | 162.1 | | | | 92.5 | | | 1194 | 6.2696 | 1223 | |
| YBPT3 315L2-10 | 90 | | 191.0 | | | 93.0 | 1433 | | | 7.3420 | 1405 | | |
| YBPT3 355S-10 | (90) | 593 | 191.0 | 5.5 | 93.0 | 0.78 | 1751 | 1.3 | 2.0 | 10.806 | 1526 | | |
| YBPT3 355M1-10 | 110 | | 229.9 | | | | | | | 93.2 | 2101 | 11.098 | 1470 |
| YBPT3 355M2-10 | 132 | | 275.0 | | | | | | | 93.5 | 2547 | 12.266 | 1668 |
| YBPT3 355L-10 | 160 | | 333.3 | | | | | | | | 2945 | 16.063 | 1964 |
| YBPT3 355L-10 | (185) | | 385.4 | | | | | | | | 17.231 | 2074 | |
| 同 步 转 速 500 r/min (12P) | | | | | | | | | | | | | |
| YBPT3 355S1-12 | 75 | 493 | 166.1 | 5.5 | 91.5 | 0.75 | 1433 | 1.3 | 2.0 | 11.682 | 1512 | | |
| YBPT3 355S2-12 | 90 | | 198.2 | | 92.0 | | 1719 | | | 16.386 | 1580 | | |
| YBPT3 355M-12 | 110 | | 240.9 | | 92.5 | | 2101 | | | 18.206 | 1735 | | |
| 同 步 转 速 428 r/min (14P) | | | | | | | | | | | | | |
| YBPT3 355S1-14 | 55 | 422 | 131.2 | 5.5 | 91.0 | 0.70 | 1226 | 1.3 | 2.0 | 13.837 | 1484 | | |
| YBPT3 355S2-14 | 75 | | 178.9 | | | | 1671 | | | 14.565 | 1522 | | |
| YBPT3 355M1-14 | 90 | | 204.7 | | | | 2001 | | | 16.386 | 1600 | | |

| | | | | | | | | | | | |
|-------------------------|-----|-----|-------|-----|------|------|------|-----|-----|--------|------|
| YBPT3 355M2-14 | 110 | | 243.5 | | | 0.75 | 2451 | | | 18.935 | 1767 |
| 同 步 转 速 375 r/min (16P) | | | | | | | | | | | |
| YBPT3 355S1-16 | 55 | 370 | 140.7 | 5.5 | 90.0 | 0.66 | 1401 | 1.2 | 2.0 | 15.293 | 1519 |
| YBPT3 355S2-16 | 75 | | 191.8 | | | | 1910 | | | 17.478 | 1612 |
| YBPT3 355M-16 | 90 | | 228.9 | | | | 2292 | | | 20.027 | 1771 |
| 注：带 () 为不推荐的规格。 | | | | | | | | | | | |

10 YBPT3 系列电动机外形及安装尺寸图

a) 机座带底脚、端盖上无凸缘的电动机数据(见表4)；外形尺寸图(见图8~图10)；

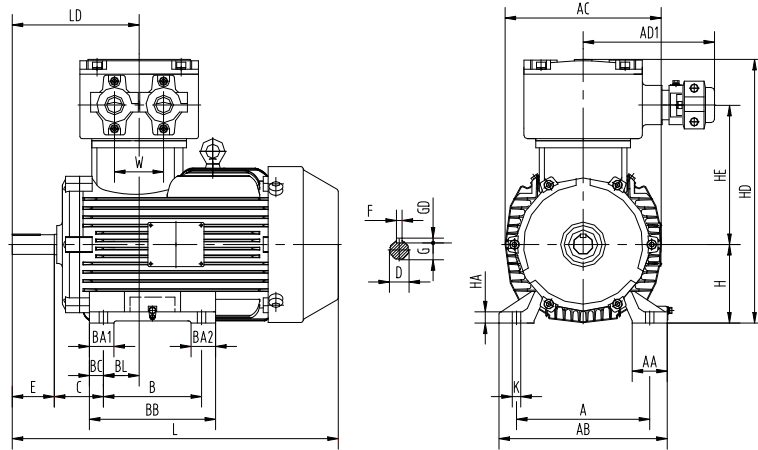


图8 YBPT3 80~132 外形及安装尺寸图

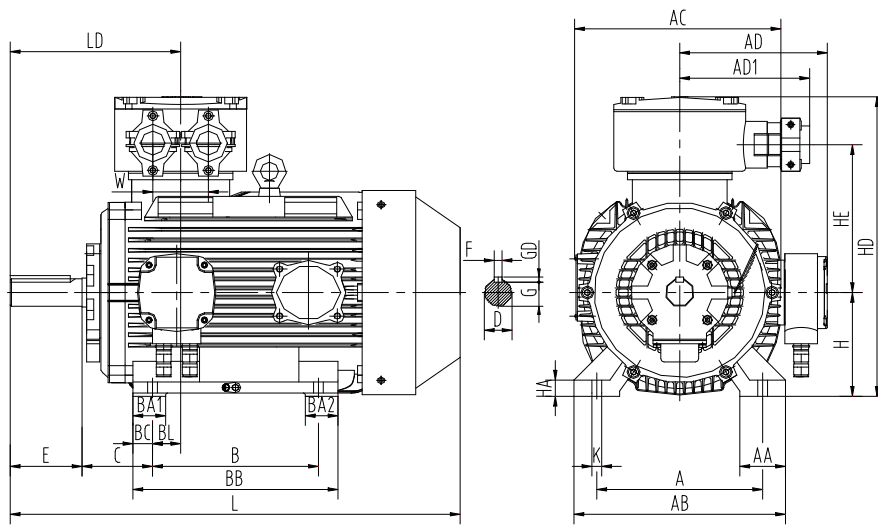


图9 YBPT3 160~280 外形及安装尺寸图

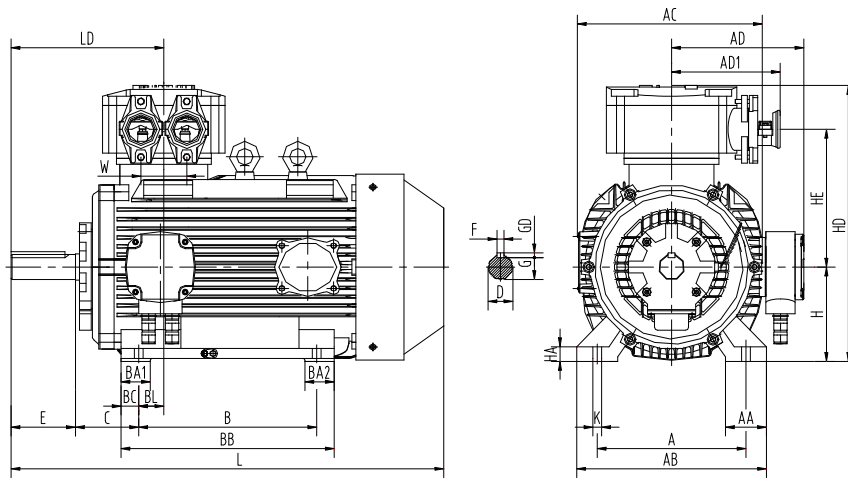


图 10 YBPT3 315~355 外形及安装尺寸图

表4 机座带底脚、端盖上无凸缘的电动机数据

单位为毫米

| 型号 | 安 装 尺 寸 及 公 差 | | | | | | | | | | | | | | 外 形 尺 寸 | | | | | | | | | | | | | | | | | | | |
|--------------------|---------------|-----|------|----------|----------|----------|------------------|----------|----------|-------------|------------------|------------|----------|----|------------|------------|----------|----------|-----|-----|-----|-----|------------------|------|-----|------|-----|------|------|-------|------------------|------------------|------|-----|
| | A | B | BC | C | | D | | E | | F | | G | | GD | H | | K | | AA | AB | AC | AD | AD1 | BA1 | BA2 | BB | BL | HA | HD | HE | L (IC 411) | L (IC41 6) | LD | W |
| | | | | 基本 尺寸 | 极限 偏差 | 基本 尺寸 | 极限 偏差 | 基本 尺寸 | 极限 偏差 | 基本 尺寸 | 极限 偏差 | 基本 尺寸 | 极限 偏差 | | 基本 尺寸 | 极限 偏差 | 基本 尺寸 | 极限 偏差 | | | | | | | | | | | | | | | | |
| YBPT3 80M | 125 | 100 | 15 | 50 | ±1.5 | 19 | 50 | 40 | 6 | 0 -0.030 | 15.5 | 0 -0.10 | 6 | 80 | 10 | +0.36 0 | 40 | 165 | 172 | — | 188 | 30 | 130 | 54 | 10 | 320 | 174 | 326 | 510 | 144 | 70 | | | |
| YBPT3 90S | 140 | | | 56 | | 24 | | | | | +0.009 -0.004 | | 8 | 20 | | | 90 | 41 | 180 | | | | 178 | 70 | 42 | 200 | 214 | 55 | 180 | 180 | | 50 | 14 | 330 |
| YBPT3 90L | 140 | 125 | 18 | 63 | ±2.0 | 28 | 60 | ±0.3 | 10 | 0 -0.036 | 24 | 7 | 100 | 12 | +0.43 0 | 42 | 200 | 214 | — | 188 | 40 | 40 | 185 | 52.5 | 16 | 357 | 191 | 445 | 640 | 175.5 | 75 | | | |
| YBPT3 100L | 160 | 70 | | 38 | | 80 | | | | | 12 | | 37 | | | 160 | 70 | 324 | | | | 322 | 241 | 210 | 60 | 60 | 270 | 314 | 43 | 22 | | 475 | 245 | 677 |
| YBPT3 112M | 190 | 140 | 20 | 70 | ±3.0 | 48 | 110 | 14 | 14 | 0 -0.052 | 42.5 | 9 | 180 | 15 | 0 -0.5 | 70 | 349 | 362 | 260 | 210 | 70 | 70 | 311 | 43 | 515 | 260 | 742 | 910 | 274 | 93 | | | | |
| YBPT3 122S | 216 | 178 | 32.5 | 89 | | 55 | | | | | 16 | | 49 | | | 10 | 200 | 19 | 225 | | | 75 | 431 | | 460 | 300 | 256 | 100 | 100 | | 380 | 34 | 28 | 648 |
| YBPT3 132M | 216 | 178 | 32 | 108 | ±4.0 | 75 | +0.030 +0.011 | 140 | 20 | 0 -0.052 | 67.5 | 12 | 280 | 24 | +0.52 0 | 120 | 630 | 630 | 385 | 320 | 95 | 100 | 438 | 36 | 35 | 810 | 393 | 1150 | 1310 | 370 | 116 | | | |
| YBPT3 160M | 254 | 254 | | | | | | | | | 30 | | 42 | | | | | | | | | | +0.018 +0.002 | | | | | 12 | 37 | | | 160 | 70 | 324 |
| YBPT3 160L | 254 | 254 | 35 | 121 | ±3.0 | 48 | 110 | 14 | 14 | 0 -0.052 | 42.5 | 9 | 180 | 15 | 0 -0.5 | 70 | 349 | 362 | 260 | 210 | 70 | 70 | 311 | 43 | 515 | 260 | 742 | 910 | 274 | 93 | | | | |
| YBPT3 180M | 279 | 279 | | | | | | | | | 35 | | 121 | | | 55 | 16 | 49 | 10 | | | 200 | 19 | | 225 | 75 | 431 | 460 | 300 | | 256 | 100 | 100 | 380 |
| YBPT3 180L | 279 | 279 | 30 | 133 | ±4.0 | 75 | +0.030 +0.011 | 140 | 20 | 0 -0.052 | 67.5 | 12 | 280 | 24 | +0.52 0 | 120 | 630 | 630 | 385 | 320 | 95 | 100 | 438 | 36 | 35 | 810 | 393 | 1150 | 1310 | 370 | 116 | | | |
| YBPT3 200L | 318 | 305 | | | | | | | | | 30 | | 133 | | | | | | | | | | 55 | | | | | 16 | 49 | | | 10 | 200 | 19 |
| YBPT3 225M(2P) | 356 | 311 | 39.5 | 149 | ±4.0 | 75 | +0.030 +0.011 | 140 | 20 | 0 -0.052 | 67.5 | 12 | 280 | 24 | +0.52 0 | 120 | 630 | 630 | 385 | 320 | 95 | 100 | 438 | 36 | 35 | 810 | 393 | 1150 | 1310 | 370 | 116 | | | |
| YBPT3 225S(4P) | | 286 | | | | | | | | | 380 | | 34 | | | | | | | | | | 28 | | | | | 648 | 325 | | | 895 | 1025 | 323 |
| YBPT3 225M(4~8P) | | 311 | | | | | | | | | 380 | | 34 | | | | | | | | | | 28 | | | | | 648 | 325 | | | 895 | 1025 | 323 |
| YBPT3 250M(2P) | 406 | 349 | 35 | 168 | ±4.0 | 75 | +0.030 +0.011 | 140 | 20 | 0 -0.052 | 67.5 | 12 | 280 | 24 | +0.52 0 | 120 | 630 | 630 | 385 | 320 | 95 | 100 | 438 | 36 | 35 | 810 | 393 | 1150 | 1310 | 370 | 116 | | | |
| YBPT3 250M(4~8P) | | 419 | | | | | | | | | 438 | | 36 | | | | | | | | | | 35 | | | | | 810 | 393 | | | 1150 | 1310 | |
| YBPT3 280S(2P) | 457 | 368 | 32 | 190 | ±4.0 | 75 | +0.030 +0.011 | 140 | 20 | 0 -0.052 | 67.5 | 12 | 280 | 24 | +0.52 0 | 120 | 630 | 630 | 385 | 320 | 95 | 100 | 438 | 36 | 35 | 810 | 393 | 1150 | 1310 | 370 | 116 | | | |
| YBPT3 280M(2P) | | 419 | | | | | | | | | 438 | | 36 | | | | | | | | | | 35 | | | | | 810 | 393 | | | 1150 | 1310 | |
| YBPT3 280S(4~8P) | | 368 | | | | | | | | | 438 | | 36 | | | | | | | | | | 35 | | | | | 810 | 393 | | | 1150 | 1310 | |
| YBPT3 280M(4~8P) | | 419 | | | | | | | | | 438 | | 36 | | | | | | | | | | 35 | | | | | 810 | 393 | | | 1150 | 1310 | |
| YBPT3 315S(2P) | 508 | 406 | 55 | 216 | ±4.0 | 75 | +0.035 +0.013 | 170 | 25 | 0 -0.052 | 86 | 14 | 355 | 28 | +0.52 0 | 140 | 630 | 630 | 385 | 370 | 140 | 260 | 710 | 16 | 52 | 1020 | 517 | 1455 | 1690 | 410 | 137 | | | |
| YBPT3 315M(2P) | | 457 | | | | | | | | | 240 | | 680 | | | | | | | | | | 1357 | | | | | 1650 | 393 | | | | | |
| YBPT3 315L(2P) | | 508 | | | | | | | | | 150 | | 550 | | | | | | | | | | 1400 | | | | | 1550 | 423 | | | | | |
| YBPT3 315S(4~10P) | | 406 | | | | | | | | | 240 | | 680 | | | | | | | | | | 1550 | | | | | 1680 | 423 | | | | | |
| YBPT3 315M(4~10P) | | 457 | | | | | | | | | 240 | | 680 | | | | | | | | | | 1550 | | | | | 1680 | 423 | | | | | |
| YBPT3 315L(4~10P) | | 508 | | | | | | | | | 240 | | 680 | | | | | | | | | | 1550 | | | | | 1680 | 423 | | | | | |
| YBPT3 355S(2P) | 610 | 500 | 79 | 254 | ±4.0 | 75 | +0.035 +0.013 | 170 | 25 | 0 -0.052 | 86 | 14 | 355 | 28 | +0.52 0 | 140 | 630 | 630 | 385 | 370 | 140 | 260 | 710 | 16 | 52 | 1020 | 517 | 1455 | 1690 | 410 | 137 | | | |
| YBPT3 355M(2P) | | 560 | | | | | | | | | 840 | | 1585 | | | | | | | | | | 1820 | | | | | 440 | | | | | | |
| YBPT3 355L(2P) | | 630 | | | | | | | | | 710 | | 1500 | | | | | | | | | | 1720 | | | | | 440 | | | | | | |
| YBPT3 355S(4~16P) | | 500 | | | | | | | | | 710 | | 1500 | | | | | | | | | | 1720 | | | | | 440 | | | | | | |
| YBPT3 355M(4~10P) | | 560 | | | | | | | | | 840 | | 1585 | | | | | | | | | | 1820 | | | | | 440 | | | | | | |
| YBPT3 355L(4~10P) | 630 | 840 | 1585 | 1820 | 440 | | | | | | | | | | | | | | | | | | | | | | | | | | | | | |
| YBPT3 355M(12~16P) | 630 | 840 | 1585 | 1820 | 440 | | | | | | | | | | | | | | | | | | | | | | | | | | | | | |

b) 机座带底脚、端盖上有凸缘(带通孔)的电动机数据 (见表 5), 外形尺寸图(见图 11~图 13)。

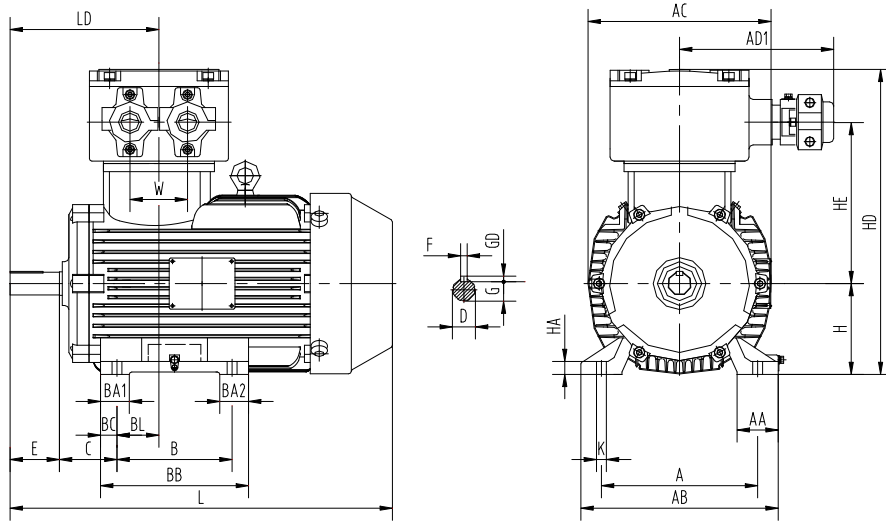


图 11 YBPT3 80~132 结构示意图

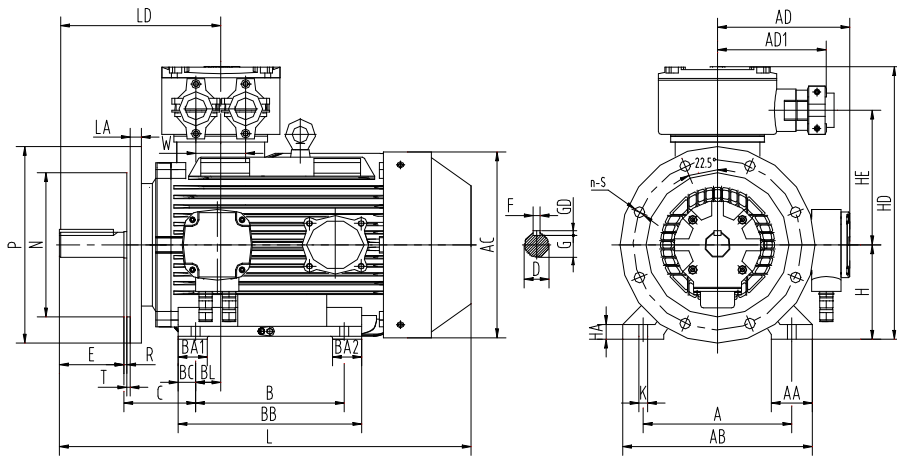


图 12 YBPT3 160~280 结构示意图

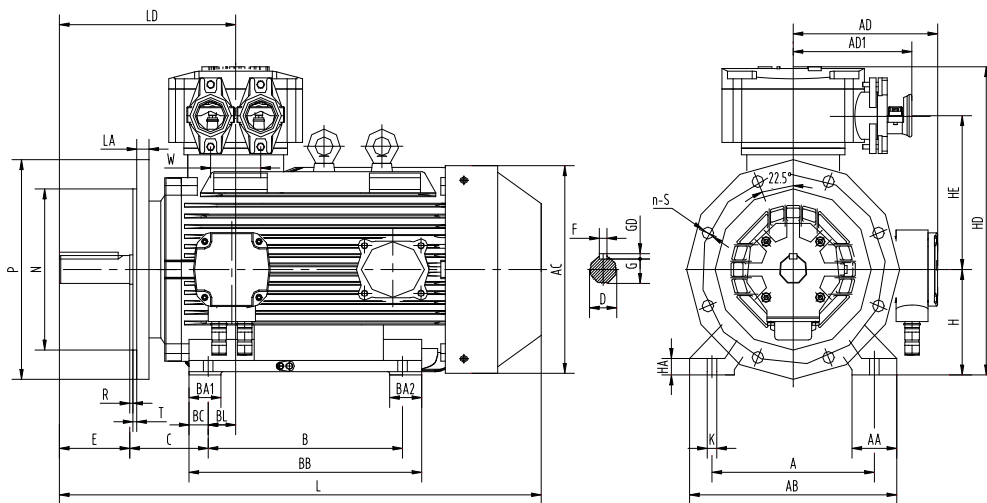


图 13 YBPT3 315~355 结构示意图

表5 机座带底脚、端盖上有凸缘（带通孔）的电动机数据

单位为毫米

| 型号 | 安 装 尺 寸 及 公 差 | | | | | | | | | | | | | | | | | | | 外 形 尺 寸 | | | | | | | | | | | | | | | | | | | | | | | | |
|-------------------|---------------|------|------|------|------|------|------|------|------|---------------------------------------|------|---------------------------------|---------------------------------------|--------|------|------|------|------|------|---------|---------------------------------|---------------------------------|---------------------------------------|-----|--------|------|------|--------|--------|-----|-----|-----|-----|-----|------|-----|-----|-----|-----|-----|------------|------------|-----|-----|
| | A | B | C | | D | | E | | F | | G | | GD | M | N | | P | R | | S | | T | | n | H | | K | | AA | AB | AC | AD | AD1 | BA1 | BA2 | BB | BL | HA | HD | HE | L (IC4 11) | L (IC4 16) | LD | W |
| | | | 基本尺寸 | 极限偏差 | 基本尺寸 | 极限偏差 | 基本尺寸 | 极限偏差 | 基本尺寸 | 极限偏差 | 基本尺寸 | 极限偏差 | | | 基本尺寸 | 极限偏差 | | 基本尺寸 | 极限偏差 | 基本尺寸 | 极限偏差 | 基本尺寸 | 极限偏差 | | 基本尺寸 | 极限偏差 | 基本尺寸 | 极限偏差 | | | | | | | | | | | | | | | | |
| YBPT3 80M | 125 | 100 | 15 | 50 | ±1.5 | 19 | 50 | 40 | 6 | ⁰ / _{-0.030} | 15.5 | ⁰ / _{-0.10} | 6 | 165 | 130 | 200 | ±1.5 | 12 | 3.5 | 80 | 10 | ^{+0.36} / ₀ | 40 | 165 | 172 | 188 | 30 | 55 | 155 | 180 | 50 | 14 | 330 | 177 | 375 | 600 | 156 | 70 | | | | | | |
| YBPT3 90S | 140 | | | 56 | | 24 | | | | ^{+0.009} / _{-0.004} | 8 | 20 | ^{+0.014} / _{-0.011} | | | | | | | | | | 7 | 215 | 180 | | | | | | | | | | | | | | 250 | 100 | 112 | 42 | 200 | 214 |
| YBPT3 90L | 140 | 125 | 70 | ±2.0 | 28 | 60 | 80 | ±0.3 | 10 | ⁰ / _{-0.036} | 24 | 265 | 230 | 300 | ±2.0 | 15 | 4 | 4 | 132 | 12 | ^{+0.43} / ₀ | 55 | 264 | 262 | 210 | 56 | 56 | 200 | 240 | 45 | 18 | 420 | 221 | 536 | 720 | 214 | 75 | | | | | | | |
| YBPT3 100L | 160 | 18 | 63 | | 38 | | | | | ^{+0.018} / _{-0.002} | 12 | | | | | | | | | | | 37 | ^{+0.016} / _{-0.013} | 8 | | | | | | | | | | | | | | 300 | 250 | 350 | 160 | 160 | 324 | 241 |
| YBPT3 112M | 190 | 140 | 20 | 70 | ±3.0 | 48 | 110 | 14 | 42.5 | 9 | 350 | 300 | ±0.016 | 400 | ±3.0 | 19 | 5 | 225 | 19 | 5 | 225 | 19 | 70 | 349 | 362 | 260 | 70 | 70 | 311 | 349 | 515 | 260 | 742 | 910 | 274 | 93 | | | | | | | | |
| YBPT3 132S | 216 | 32.5 | 89 | 55 | | | | | | | | | | | | | | | | | | | 16 | 49 | 10 | 350 | 300 | ±0.018 | 450 | 400 | 200 | 200 | 72 | 390 | 403 | 276 | 122 | 74 | 366 | 55 | 25 | 598 | 310 | 855 |
| YBPT3 132M | 216 | 178 | 35 | 121 | ±4.0 | 65 | 140 | ±0.5 | 18 | ⁰ / _{-0.043} | 53 | 500 | 450 | ±0.020 | 550 | 0 | 19 | 5 | 250 | 24 | ^{+0.43} / ₀ | 75 | 431 | 460 | 300 | 256 | 100 | 100 | 380 | 34 | 28 | 648 | 325 | 895 | 1025 | 323 | 93 | | | | | | | |
| YBPT3 160M | 254 | 210 | 30 | 108 | | | | | | 60 | 53 | | | | | | | | | | | 18 | 500 | 450 | ±0.020 | 550 | 400 | 200 | 200 | 72 | 390 | 403 | 276 | 122 | 74 | 366 | 55 | 25 | 598 | 310 | 855 | 1000 | 298 | 93 |
| YBPT3 160L | 254 | 254 | 35 | 121 | ±3.0 | 48 | 110 | 14 | 42.5 | 9 | 350 | 300 | ±0.018 | 450 | ±3.0 | 19 | 5 | 225 | 19 | 5 | 225 | 19 | 70 | 349 | 362 | 260 | 70 | 70 | 311 | 349 | 515 | 260 | 742 | 910 | 274 | 93 | | | | | | | | |
| YBPT3 180M | 279 | 241 | 35 | 121 | | | | | | | | | | | | | | | | | | | 60 | 53 | 18 | 500 | 450 | ±0.020 | 550 | 400 | 200 | 200 | 72 | 390 | 403 | 276 | 122 | 74 | 366 | 55 | 25 | 598 | 310 | 855 |
| YBPT3 180L | 279 | 279 | 35 | 121 | ±3.0 | 48 | 110 | 14 | 42.5 | 9 | 350 | 300 | ±0.016 | 400 | ±3.0 | 19 | 5 | 225 | 19 | 5 | 225 | 19 | 70 | 349 | 362 | 260 | 70 | 70 | 311 | 349 | 515 | 260 | 742 | 910 | 274 | 93 | | | | | | | | |
| YBPT3 200L | 318 | 305 | 30 | 133 | | | | | | | | | | | | | | | | | | | 55 | 16 | 49 | 10 | 350 | 300 | ±0.016 | 400 | 400 | 200 | 72 | 390 | 403 | 276 | 122 | 74 | 366 | 55 | 25 | 598 | 310 | 855 |
| YBPT3 225M(2P) | 311 | 311 | 39.5 | 149 | ±4.0 | 65 | 140 | ±0.5 | 18 | ⁰ / _{-0.043} | 53 | 500 | 450 | ±0.020 | 550 | 0 | 19 | 5 | 250 | 24 | ^{+0.43} / ₀ | 75 | 431 | 460 | 300 | 256 | 100 | 100 | 380 | 34 | 28 | 648 | 325 | 895 | 1025 | 323 | 93 | | | | | | | |
| YBPT3 225S(4P) | 356 | 286 | 39.5 | 149 | | | | | | 60 | 53 | | | | | | | | | | | 18 | 500 | 450 | ±0.020 | 550 | 400 | 200 | 200 | 72 | 390 | 403 | 276 | 122 | 74 | 366 | 55 | 25 | 598 | 310 | 855 | 1000 | 298 | 93 |
| YBPT3 225M(4~8P) | 311 | 311 | 35 | 168 | ±4.0 | 65 | 140 | ±0.5 | 18 | ⁰ / _{-0.043} | 53 | 500 | 450 | ±0.020 | 550 | 0 | 19 | 5 | 250 | 24 | ^{+0.43} / ₀ | 75 | 431 | 460 | 300 | 256 | 100 | 100 | 380 | 34 | 28 | 648 | 325 | 895 | 1025 | 323 | 93 | | | | | | | |
| YBPT3 250M(2P) | 406 | 349 | 35 | 168 | | | | | | 60 | 53 | | | | | | | | | | | 18 | 500 | 450 | ±0.020 | 550 | 400 | 200 | 200 | 72 | 390 | 403 | 276 | 122 | 74 | 366 | 55 | 25 | 598 | 310 | 855 | 1000 | 298 | 93 |
| YBPT3 250M(4~8P) | 406 | 349 | 35 | 168 | ±4.0 | 65 | 140 | ±0.5 | 18 | ⁰ / _{-0.043} | 53 | 500 | 450 | ±0.020 | 550 | 0 | 19 | 5 | 250 | 24 | ^{+0.43} / ₀ | 75 | 431 | 460 | 300 | 256 | 100 | 100 | 380 | 34 | 28 | 648 | 325 | 895 | 1025 | 323 | 93 | | | | | | | |
| YBPT3 280S(2P) | 457 | 368 | 32 | 190 | | | | | | 60 | 53 | | | | | | | | | | | 18 | 500 | 450 | ±0.020 | 550 | 400 | 200 | 200 | 72 | 390 | 403 | 276 | 122 | 74 | 366 | 55 | 25 | 598 | 310 | 855 | 1000 | 298 | 93 |
| YBPT3 280M(2P) | 457 | 419 | 32 | 190 | ±4.0 | 65 | 140 | ±0.5 | 18 | ⁰ / _{-0.043} | 53 | 500 | 450 | ±0.020 | 550 | 0 | 19 | 5 | 250 | 24 | ^{+0.43} / ₀ | 75 | 431 | 460 | 300 | 256 | 100 | 100 | 380 | 34 | 28 | 648 | 325 | 895 | 1025 | 323 | 93 | | | | | | | |
| YBPT3 280S(4~8P) | 457 | 368 | 32 | 190 | | | | | | 60 | 53 | | | | | | | | | | | 18 | 500 | 450 | ±0.020 | 550 | 400 | 200 | 200 | 72 | 390 | 403 | 276 | 122 | 74 | 366 | 55 | 25 | 598 | 310 | 855 | 1000 | 298 | 93 |
| YBPT3 280M(4~8P) | 457 | 419 | 32 | 190 | ±4.0 | 65 | 140 | ±0.5 | 18 | ⁰ / _{-0.043} | 53 | 500 | 450 | ±0.020 | 550 | 0 | 19 | 5 | 250 | 24 | ^{+0.43} / ₀ | 75 | 431 | 460 | 300 | 256 | 100 | 100 | 380 | 34 | 28 | 648 | 325 | 895 | 1025 | 323 | 93 | | | | | | | |
| YBPT3 315S(2P) | 508 | 406 | 55 | 216 | | | | | | 60 | 53 | | | | | | | | | | | 18 | 500 | 450 | ±0.020 | 550 | 400 | 200 | 200 | 72 | 390 | 403 | 276 | 122 | 74 | 366 | 55 | 25 | 598 | 310 | 855 | 1000 | 298 | 93 |
| YBPT3 315M(2P) | 508 | 457 | 55 | 216 | ±4.0 | 65 | 140 | ±0.5 | 18 | ⁰ / _{-0.043} | 53 | 500 | 450 | ±0.020 | 550 | 0 | 19 | 5 | 250 | 24 | ^{+0.43} / ₀ | 75 | 431 | 460 | 300 | 256 | 100 | 100 | 380 | 34 | 28 | 648 | 325 | 895 | 1025 | 323 | 93 | | | | | | | |
| YBPT3 315L(2P) | 508 | 508 | 55 | 216 | | | | | | 60 | 53 | | | | | | | | | | | 18 | 500 | 450 | ±0.020 | 550 | 400 | 200 | 200 | 72 | 390 | 403 | 276 | 122 | 74 | 366 | 55 | 25 | 598 | 310 | 855 | 1000 | 298 | 93 |
| YBPT3 315S(4~10P) | 508 | 406 | 55 | 216 | ±4.0 | 65 | 140 | ±0.5 | 18 | ⁰ / _{-0.043} | 53 | 500 | 450 | ±0.020 | 550 | 0 | 19 | 5 | 250 | 24 | ^{+0.43} / ₀ | 75 | 431 | 460 | 300 | 256 | 100 | 100 | 380 | 34 | 28 | 648 | 325 | 895 | 1025 | 323 | 93 | | | | | | | |
| YBPT3 315M(4~10P) | 508 | 457 | 55 | 216 | | | | | | 60 | 53 | | | | | | | | | | | 18 | 500 | 450 | ±0.020 | 550 | 400 | 200 | 200 | 72 | 390 | 403 | 276 | 122 | 74 | 366 | 55 | 25 | 598 | 310 | 855 | 1000 | 298 | 93 |
| YBPT3 315L(4~10P) | 508 | 508 | 55 | 216 | ±4.0 | 65 | 140 | ±0.5 | 18 | ⁰ / _{-0.043} | 53 | 500 | 450 | ±0.020 | 550 | 0 | 19 | 5 | 250 | 24 | ^{+0.43} / ₀ | 75 | 431 | 460 | 300 | 256 | 100 | 100 | 380 | 34 | 28 | 648 | 325 | 895 | 1025 | 323 | 93 | | | | | | | |
| YBPT3 355S(2P) | 610 | 500 | 79 | 254 | | | | | | 60 | 53 | | | | | | | | | | | 18 | 500 | 450 | ±0.020 | 550 | 400 | 200 | 200 | 72 | 390 | 403 | 276 | 122 | 74 | 366 | 55 | 25 | 598 | 310 | 855 | 1000 | 298 | 93 |
| YBPT3 355M(2P) | 610 | 560 | 79 | 254 | ±4.0 | 65 | 140 | ±0.5 | 18 | ⁰ / _{-0.043} | 53 | 500 | 450 | ±0.020 | 550 | 0 | 19 | 5 | 250 | 24 | ^{+0.43} / ₀ | 75 | 431 | 460 | 300 | 256 | 100 | 100 | 380 | 34 | 28 | 648 | 325 | 895 | 1025 | 323 | 93 | | | | | | | |
| YBPT3 355L(2P) | 610 | 630 | 79 | 254 | | | | | | 60 | 53 | | | | | | | | | | | 18 | 500 | 450 | ±0.020 | 550 | 400 | 200 | 200 | 72 | 390 | 403 | 276 | 122 | 74 | 366 | 55 | 25 | 598 | 310 | 855 | 1000 | 298 | 93 |
| YBPT3 355S(4~16P) | 610 | 500 | 79 | 254 | ±4.0 | 65 | 140 | ±0.5 | 18 | ⁰ / _{-0.043} | 53 | 500 | 450 | ±0.020 | 550 | 0 | 19 | 5 | 250 | 24 | ^{+0.43} / ₀ | 75 | 431 | 460 | 300 | 256 | 100 | 100 | 380 | 34 | 28 | 648 | 325 | 895 | 1025 | 323 | 93 | | | | | | | |
| YBPT3 355M(4~10P) | 610 | 560 | 79 | 254 | | | | | | 60 | 53 | | | | | | | | | | | 18 | 500 | 450 | ±0.020 | 550 | 400 | 200 | 200 | 72 | 390 | 403 | 276 | 122 | 74 | 366 | 55 | 25 | 598 | 310 | 855 | 1000 | 298 | 93 |
| YBPT3 355L(4~10P) | 610 | 630 | 79 | 254 | ±4.0 | 65 | 140 | ±0.5 | 18 | ⁰ / _{-0.043} | 53 | 500 | 450 | ±0.020 | 550 | 0 | 19 | 5 | 250 | 24 | ^{+0.43} / ₀ | | | | | | | | | | | | | | | | | | | | | | | |

c) 卧式安装或立式安装，机座不带底脚、端盖上有凸缘（带通孔）的电动机数据(见表 6)，外形尺寸图(见图 14~图 16)。

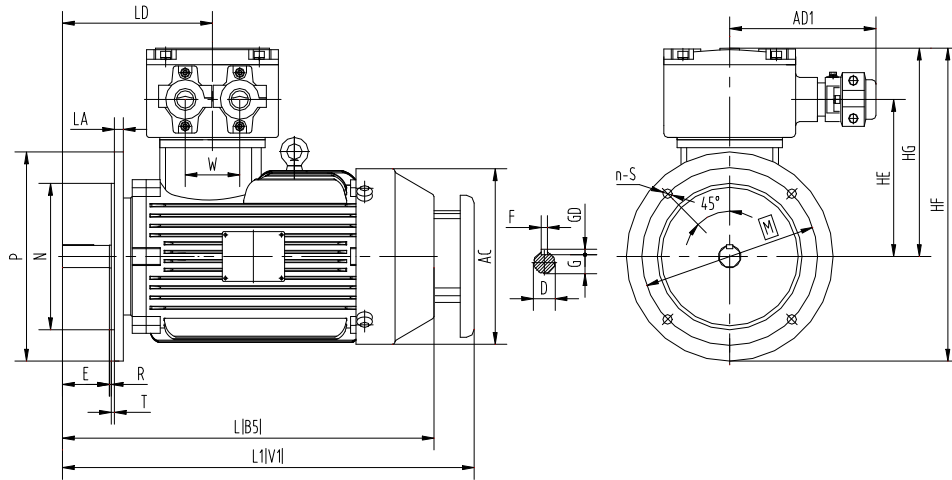


图 14 YBPT3 80~132 结构示意图

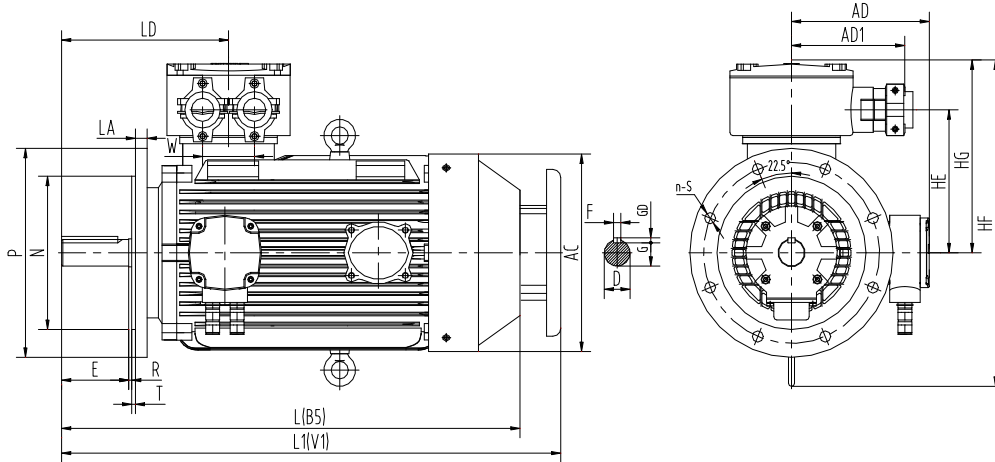


图 15 YBPT3 160~280 结构示意图

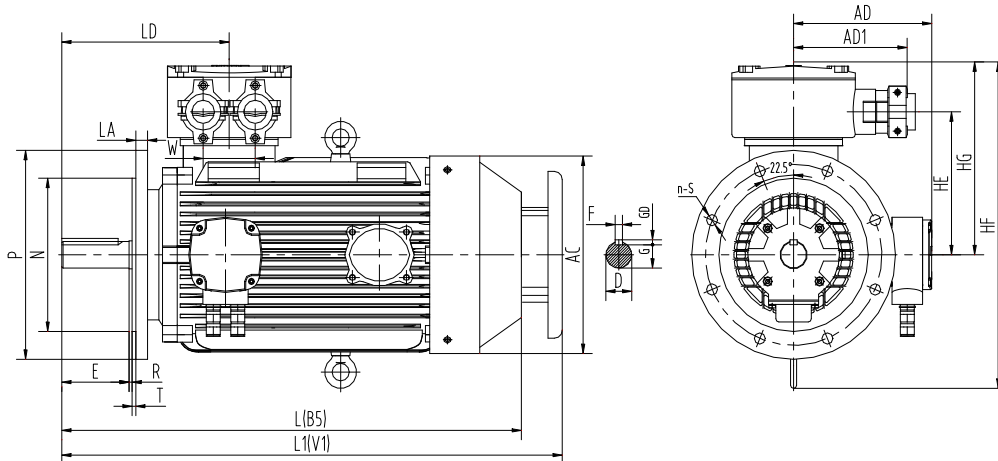


图 16 YBPT3 315~355 结构示意图

表 6 卧式安装或立式安装，机座不带底脚、端盖上有凸缘（带通孔）的电动机数据

单位为毫米

| 产品型号 | 安 装 尺 寸 及 公 差 | | | | | | | | | | | | | | | | | 外 形 尺 寸 | | | | | | | | | | | | | | | | | | | | | | | | | | | | | | | | | | | | | | | | | | | | | | | | | | | | |
|---------------------|---------------|---------------------------------------|------|------|----------------------------------|----------------------------------|------|---------------------------------|----|-----|------|---------------------------------------|-----|------|--------|------|------|---------|------|---|-----|----|-----|-----|-----|------|------------|------------|-------------|-------------|------|-------|-----|------|------|--|--|--|--|--|--|--|--|--|--|--|--|--|--|--|--|--|--|--|--|--|--|--|--|--|--|--|--|--|--|--|--|--|--|--|
| | D | | E | | F | | G | | GD | M | N | | P | R | | S | | T | | n | AC | AD | AD1 | HE | HF | HG | L (IC4 11) | L (IC4 16) | L1 (IC4 11) | L1 (IC4 16) | LA | LD | W | | | | | | | | | | | | | | | | | | | | | | | | | | | | | | | | | | | | | |
| | 基本尺寸 | 极限偏差 | 基本尺寸 | 极限偏差 | 基本尺寸 | 极限偏差 | 基本尺寸 | 极限偏差 | | | 基本尺寸 | 极限偏差 | | 基本尺寸 | 极限偏差 | 基本尺寸 | 极限偏差 | 基本尺寸 | 极限偏差 | | | | | | | | | | | | | | | 基本尺寸 | 极限偏差 | | | | | | | | | | | | | | | | | | | | | | | | | | | | | | | | | | | |
| YBPT3 80M | 19 | | 40 | | 6 | ⁰ / _{-0.030} | 15.5 | ⁰ / _{-0.10} | 6 | | | | | | | | | | | | 172 | | | 174 | 340 | 240 | 326 | 510 | 356 | 560 | | 156 | | | | | | | | | | | | | | | | | | | | | | | | | | | | | | | | | | | | | | |
| YBPT3 90S | 24 | ^{+0.009} / _{-0.004} | 50 | | 8 | | 20 | | 7 | 165 | 130 | ^{+0.014} / _{-0.011} | 200 | | ±1.5 | 12 | | 3.5 | | | | | 188 | 177 | 340 | 240 | 375 | 600 | 405 | 650 | 12 | 156 | 70 | | | | | | | | | | | | | | | | | | | | | | | | | | | | | | | | | | | | | |
| YBPT3 90L | | | | | | | | | | | | | | | | | | | | | | | | | | | | | | | | | | | | | | | | | | | | | | | | | | | | | | | | | | | | | | | | | | | | | | |
| YBPT3 100L | 28 | | 60 | | 8 | ⁰ / _{-0.036} | 24 | | 7 | 215 | 180 | | 250 | | ±2.0 | 15 | | 4 | | | | | - | 191 | 382 | 257 | 445 | 640 | 480 | 690 | 14 | 175.5 | | | | | | | | | | | | | | | | | | | | | | | | | | | | | | | | | | | | | | |
| YBPT3 112M | | | | | | | | | | | | | | | | | | | | | | | | | | | | | | | | | | | | | | | | | | | | | | | | | | | | | | | | | | | | | | | | | | | | | | |
| YBPT3 132S | 38 | | 80 | ±0.3 | 10 | | 33 | | 8 | 265 | 230 | | 300 | | | | | | | | | | | 221 | 472 | 288 | 536 | 720 | 581 | 780 | 14 | 214 | | | | | | | | | | | | | | | | | | | | | | | | | | | | | | | | | | | | | | |
| YBPT3 132M | | | | | | | | | | | | | | | | | | | | | | | | | | | | | | | | | | | | | | | | | | | | | | | | | | | | | | | | | | | | | | | | | | | | | | |
| YBPT3 160M | 42 | ^{+0.018} / _{+0.002} | | | 12 | | 37 | | 8 | 300 | 250 | ^{+0.016} / _{-0.013} | 350 | | | | | | | | | | 322 | 241 | 210 | 245 | 533 | 315 | 667 | 845 | 746 | 905 | 18 | 261 | 75 | | | | | | | | | | | | | | | | | | | | | | | | | | | | | | | | | | | |
| YBPT3 160L | | | | | | | | | | | | | | | | | | | | | | | | | | | | | | | | | | | | | | | | | | | | | | | | | | | | | | | | | | | | | | | | | | | | | | |
| YBPT3 180M | 48 | | 110 | | 14 | | 42.5 | | 9 | | | | 350 | | ±3.0 | | | | | | | | 362 | 260 | | 260 | 568 | 335 | 742 | 910 | 808 | 960 | 18 | 274 | | | | | | | | | | | | | | | | | | | | | | | | | | | | | | | | | | | | |
| YBPT3 180L | | | | | | | | | | | | | | | | | | | | | | | | | | | | | | | | | | | | | | | | | | | | | | | | | | | | | | | | | | | | | | | | | | | | | | |
| YBPT3 200L | 55 | | | | 16 | | 49 | | 10 | 350 | 300 | ±0.016 | 400 | | | | | | | | | | 403 | 276 | | 310 | 691 | 398 | 851 | 1000 | 911 | 1060 | 20 | 298 | 93 | | | | | | | | | | | | | | | | | | | | | | | | | | | | | | | | | | | |
| YBPT3 225M(2P) | | | | | | | | | | | | | | | | | | | | | | | | | | | | | | | | | | | | | | | | | | | | | | | | | | | | | | | | | | | | | | | | | | | | | | |
| YBPT3 225S(4P) | 60 | | | | ⁰ / _{-0.043} | | 53 | | 11 | 400 | 350 | ±0.018 | 450 | | | 19 | | 5 | | | | | | 256 | 325 | 720 | 423 | 886 | 1025 | 946 | 1085 | 20 | 323 | | | | | | | | | | | | | | | | | | | | | | | | | | | | | | | | | | | | | |
| YBPT3 225M(4~8P) | | | | | | | | | | | | | | | | | | | | | | | | | | | | | | | | | | | | | | | | | | | | | | | | | | | | | | | | | | | | | | | | | | | | | | |
| YBPT3 250M(2P) | 65 | | 140 | | 18 | | 58 | ⁰ / _{-0.20} | 11 | 500 | 450 | ±0.020 | 550 | | 0 | | | | | | | | | 320 | 368 | 800 | 490 | 960 | 1110 | 1033 | 1170 | 22 | 360 | 116 | | | | | | | | | | | | | | | | | | | | | | | | | | | | | | | | | | | | |
| YBPT3 250M(4~8P) | | | | | | | | | | | | | | | | | | | | | | | | | | | | | | | | | | | | | | | | | | | | | | | | | | | | | | | | | | | | | | | | | | | | | | |
| YBPT3 280S(2P) | 75 | ^{+0.030} / _{+0.011} | | | 20 | ⁰ / _{-0.052} | 67.5 | | 12 | | | | 500 | | | | | | | | | | | 360 | 393 | 900 | 530 | 1050 | 1310 | 1115 | 1380 | 22 | 366 | | | | | | | | | | | | | | | | | | | | | | | | | | | | | | | | | | | | | |
| YBPT3 280M(2P) | | | | | | | | | | | | | | | | | | | | | | | | | | | | | | | | | | | | | | | | | | | | | | | | | | | | | | | | | | | | | | | | | | | | | | |
| YBPT3 280M(4~8P) | 75 | | | | 20 | ⁰ / _{-0.052} | 67.5 | | 12 | | | | 500 | | | | | | | | | | | 360 | 393 | 900 | 530 | 1050 | 1310 | 1115 | 1380 | 22 | 366 | | | | | | | | | | | | | | | | | | | | | | | | | | | | | | | | | | | | | |
| YBPT3 315S(2P) | | | | | | | | | | | | | | | | | | | | | | | | | | | | | | | | | | | | | | | | | | | | | | | | | | | | | | | | | | | | | | | | | | | | | | |
| YBPT3 315M(2P) | 65 | | 140 | | 18 | ⁰ / _{-0.043} | 58 | | 11 | 600 | 550 | ±0.022 | 660 | | ±4.0 | | | | | | | | | 320 | 477 | 1086 | 625 | 1226 | 1520 | 1306 | 1620 | 22 | 393 | | | | | | | | | | | | | | | | | | | | | | | | | | | | | | | | | | | | | |
| YBPT3 315L(2P) | | | | | | | | | | | | | | | | | | | | | | | | | | | | | | | | | | | | | | | | | | | | | | | | | | | | | | | | | | | | | | | | | | | | | | |
| YBPT3 315S(4~10P) | 80 | | 170 | | 22 | | 71 | | 14 | | | | 600 | | | | | | | | | | | 370 | 477 | 1086 | 625 | 1307 | 1550 | 1387 | 1650 | 22 | 423 | | | | | | | | | | | | | | | | | | | | | | | | | | | | | | | | | | | | | |
| YBPT3 315M(4~10P) | | | | | | | | | | | | | | | | | | | | | | | | | | | | | | | | | | | | | | | | | | | | | | | | | | | | | | | | | | | | | | | | | | | | | | |
| YBPT3 315L(4~10P) | 80 | | 170 | | 22 | | 71 | | 14 | | | | 600 | | | | | | | | | | | 370 | 477 | 1086 | 625 | 1437 | 1680 | 1517 | 1780 | 22 | 423 | | | | | | | | | | | | | | | | | | | | | | | | | | | | | | | | | | | | | |
| YBPT3 355S(2P) | | | | | | | | | | | | | | | | | | | | | | | | | | | | | | | | | | | | | | | | | | | | | | | | | | | | | | | | | | | | | | | | | | | | | | |
| YBPT3 355M(2P) | 75 | | 140 | | 20 | ⁰ / _{-0.052} | 67.5 | | 12 | | | | 740 | 680 | ±0.025 | 800 | | | | | | | | | 370 | 517 | 1155 | 665 | 1445 | 1690 | 1546 | 1770 | 24 | 410 | 137 | | | | | | | | | | | | | | | | | | | | | | | | | | | | | | | | | | | |
| YBPT3 355L(2P) | | | | | | | | | | | | | | | | | | | | | | | | | | | | | | | | | | | | | | | | | | | | | | | | | | | | | | | | | | | | | | | | | | | | | | |
| YBPT3 355S(4P~16P) | 95 | ^{+0.035} / _{+0.013} | 170 | | 25 | | 86 | | 14 | | | | 740 | 680 | ±0.025 | 800 | | | | | | | | | 370 | 517 | 1155 | 665 | 1491 | 1720 | 1591 | 1800 | 24 | 440 | | | | | | | | | | | | | | | | | | | | | | | | | | | | | | | | | | | | |
| YBPT3 355M(4P~10P) | | | | | | | | | | | | | | | | | | | | | | | | | | | | | | | | | | | | | | | | | | | | | | | | | | | | | | | | | | | | | | | | | | | | | | |
| YBPT3 355L(4P~10P) | | | | | | | | | | | | | | | | | | | | | | | | | | | | | | | | | | | | | | | | | | | | | | | | | | | | | | | | | | | | | | | | | | | | | | |
| YBPT3 355M(12P~16P) | 95 | | 170 | | 25 | | 86 | | 14 | | | | 740 | 680 | ±0.025 | 800 | | | | | | | | | 370 | 517 | 1155 | 665 | 1621 | 1850 | 1721 | 1930 | 24 | 440 | | | | | | | | | | | | | | | | | | | | | | | | | | | | | | | | | | | | |
| YBPT3 355L(12P~16P) | | | | | | | | | | | | | | | | | | | | | | | | | | | | | | | | | | | | | | | | | | | | | | | | | | | | | | | | | | | | | | | | | | | | | | |

11 接线盒

a) 接线盒结构示意图见(图 17~图 21)，主要数据(见表 7)。

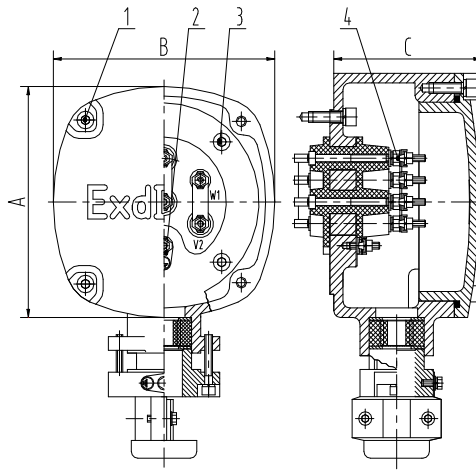


图 17 YBPT3 80~112 示意图

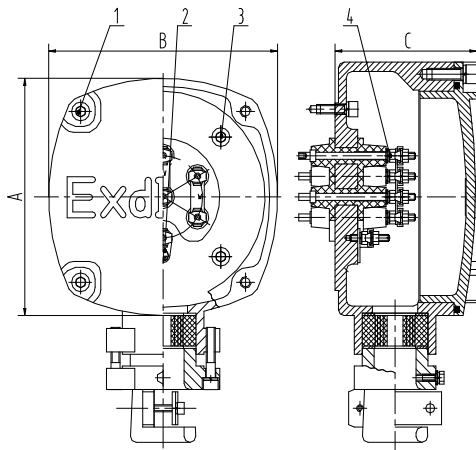


图 18 YBPT3 132~180 示意图

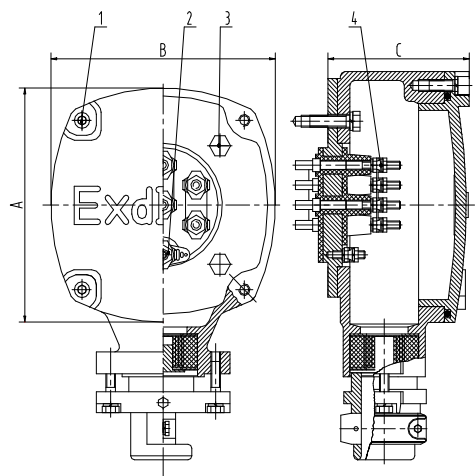


图 19 YBPT3 200~225 示意图

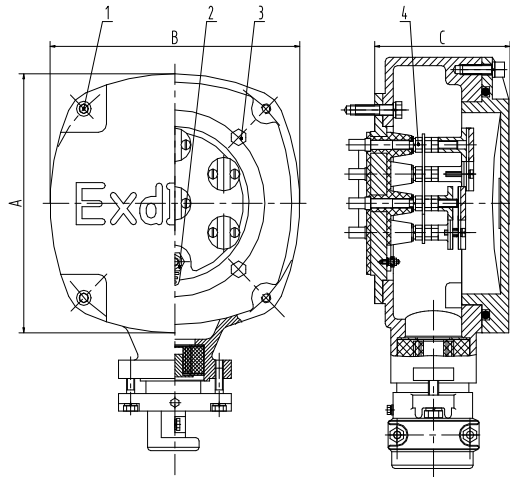


图 20 YBPT3 250~280 示意图

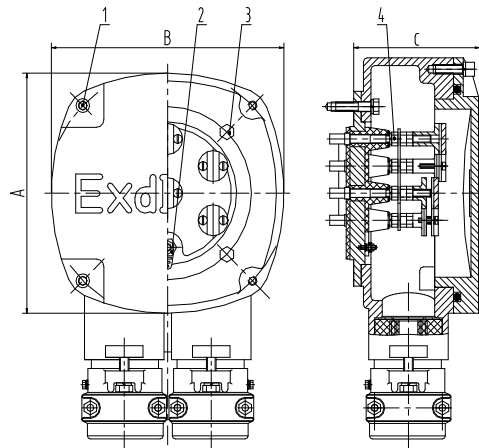


图 21 YBPT3 315~355 示意图

表 7 主接线盒外形尺寸数据

| 产品型号 | A | B | C | 1 | 2 | 3 | 4 |
|-----------------|-----|-----|-----|--------|-----|--------|-----|
| YBPT3 80~112 | 169 | 169 | 116 | M8×25 | M5 | M8×25 | M5 |
| YBPT3 132 ~ 180 | 202 | 202 | 116 | M10×30 | M6 | M10×30 | M6 |
| YBPT3 200 ~ 225 | 235 | 235 | 148 | M12×30 | M8 | M12×45 | M8 |
| YBPT3 250 ~ 280 | 310 | 310 | 180 | M12×35 | M10 | M12×50 | M10 |
| YBPT3 315 ~ 355 | 360 | 360 | 235 | M16×45 | M16 | M16×60 | M16 |

b) 接线盒内电源的接线端子数量及规格和接地端子规格数据(见表 8)

表 8 接线端子数量及规格和接地端子规格数据

| 产品型号 | 接线端子数量 | 接线端子规格 | 接地端子规格 |
|---------------|--------|--------|--------|
| YBPT3 80~112 | 6 | M5 | M5 |
| YBPT3 132~180 | | M6 | M6 |
| YBPT3 200~225 | | M8 | M8 |
| YBPT3 250~280 | | M10 | M10 |
| YBPT3 315~355 | | M16 | M12 |

c) 接线盒密封圈尺寸（用户进线电缆外径尺寸）。根据电动机电流的大小，使用条件，正确选用电缆，进入接线盒中的电缆直径要与密封圈的孔径相符，橡套电缆、铠装橡套电缆用密封圈内径切有多个同心圆，可根据电缆直径选择密封圈内径，保证压上接线斗后使密封圈与电缆之间，密封圈与接线盒座间无间隙，密封圈示意图见图 22，主要尺寸(见表 9)。

表 9 橡套电缆、铠装橡套电缆接线盒用密封圈主要尺寸

| 产品型号 | 进线方式 | D | D1 | D2 | D3 | D4 | D5 | b | b1 |
|---------------|------|----------------------|-----------|-----------|-----------|-----------|-----------|----|----|
| YBPT3 80~112 | 橡套电缆 | $\phi 42_{-0.062}^0$ | $\phi 14$ | $\phi 20$ | $\phi 25$ | — | — | 25 | 24 |
| YBPT3 132~180 | | $\phi 58_{-0.74}^0$ | | | $\phi 26$ | $\phi 31$ | $\phi 35$ | | |
| YBPT3 200~225 | | $\phi 72_{-0.74}^0$ | $\phi 20$ | $\phi 26$ | $\phi 32$ | $\phi 38$ | $\phi 42$ | 32 | 30 |
| YBPT3 250~280 | | $\phi 90_{-0.87}^0$ | $\phi 25$ | $\phi 31$ | $\phi 36$ | $\phi 45$ | $\phi 50$ | 38 | 36 |
| YBPT3 315~355 | | $\phi 105_{-0.5}^0$ | $\phi 40$ | $\phi 46$ | $\phi 51$ | $\phi 57$ | $\phi 64$ | 45 | 42 |

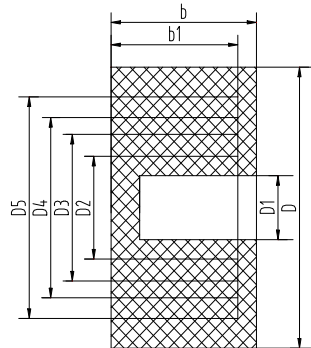


图 22 密封圈示意图

d) 电动机采用钢管布线电缆、铠装钢管布线电缆时，接线盒进线口处螺纹规格(见表 10)。

表 10 钢管布线电缆、铠装钢管布线电缆接线盒进线口处螺纹规格

| 产品型号 | 进线口螺纹规格 |
|---------------|------------------|
| YBPT3 80~112 | M30×2 |
| YBPT3 132~180 | M36×2 |
| YBPT3 200~225 | M48×2 |
| YBPT3 250~280 | M64×2 |
| YBPT3 315~355 | $G 2\frac{1}{2}$ |

e) 机座号 H160~H355 定子测温与加热器接线盒进线口处螺纹规格为 M20×1.5，接线盒进线口带隔爆型铠装双密封电缆接头，适用电缆外径范围 $\Phi 11-\Phi 14.3$ ；

f) 机座号 H160~355 轴承测温接线盒密封圈尺寸 (用户进线电缆与之相配) (见图 23)。

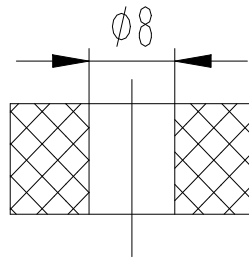


图 23 轴承测温接线盒密封圈示意图

12 轴承

12.1 轴承型号

中心高 H80~H355 轴承型号 (见表 11)。

表 11 轴承型号

| 产品型号 | 轴伸端 | 非轴伸端 |
|--------------------------|-------------|-------------|
| YBPT3 80 | 6304-2RZ/C3 | 6304-2RZ/C3 |
| YBPT3 90 | 6305-2RZ/C3 | 6305-2RZ/C3 |
| YBPT3 100 | 6306-2RZ/C3 | 6306-2RZ/C3 |
| YBPT3 112 | 6306-2RZ/C3 | 6306-2RZ/C3 |
| YBPT3 132 | 6308-2RZ/C3 | 6308-2RZ/C3 |
| YBPT3 160 | 6309/C3 | 6309/C3 |
| YBPT3 180 | 6311/C3 | 6311/C3 |
| YBPT3 200 | 6312/C3 | 6312/C3 |
| YBPT3 225 | 6313/C3 | 6313/C3 |
| YBPT3 250 | 6314/C3 | 6314/C3 |
| YBPT3 280 (2P) | 6314/C3 | 6314/C3 |
| YBPT3 280 (4~-8P) | 6317/C3 | 6317/C3 |
| YBPT3 315 (2P) | 6317/C3 | 6317/C3 |
| YBPT3 315 (4~10P) | 6319//C3 | 6319/C3 |
| YBPT3 355 (2P) B3、B35 | 6317/C3 | 6317/C3 |
| YBPT3 355 (2P) V1 | 6317/C3 | 7317B |
| YBPT3 355 (4~16P) B3、B35 | 6320/C3 | 6320/C3 |
| YBPT3 355 (4~16P) V1 | 6320/C3 | 7320B |

12.2 最大径向力 (对皮带轮传动系统)

最大径向力: 径向负载的最大允许径向力 F_0 (单位: N) 是基于以下前提条件而言的, 即负载力的作用线 (即皮带轮的中心) 必须在自由轴伸的长度以内 (长度为 X), 长度 X (mm) 是从

轴肩到 F 力作用线之间

的距离。因此, 长度 X_{max} 就是轴伸的总长度, 50Hz情况下的最大径向力, 基本结构型式 (见表13)。用户有特殊负载要求是需提出。(见表12)

表 12 50Hz 情况下的最大径向力对照表

| 产品型号 | 径向力, N | | | | | | | |
|-----------|--------|-------|-------|-------|-------|-------|-------|-------|
| | 2P | | 4P | | 6P | | 8P | |
| | X=0 | X=max | X=0 | X=max | X=0 | X=max | X=0 | X=max |
| YBPT3 80 | 485 | 400 | 625 | 515 | 735 | 605 | 815 | 675 |
| YBPT3 90 | 725 | 605 | 920 | 775 | 1090 | 910 | 1230 | 1030 |
| YBPT3 100 | 1030 | 840 | 1310 | 1060 | 1550 | 1250 | 1720 | 1400 |
| YBPT3 112 | 1010 | 830 | 1270 | 1040 | 1520 | 1240 | 1690 | 1380 |
| YBPT3 132 | 1490 | 1180 | 1940 | 1530 | 2260 | 1780 | 2500 | 1980 |
| YBPT3 160 | 1540 | 1210 | 2040 | 1590 | 2330 | 1820 | 2660 | 2080 |
| YBPT3 180 | 2000 | 1550 | 2350 | 1950 | 2800 | 2250 | 3050 | 2500 |
| YBPT3 200 | 2550 | 2100 | 3350 | 2750 | 3900 | 3200 | 4150 | 3450 |
| YBPT3 225 | 3050 | 2550 | 3750 | 2950 | 4550 | 3600 | 4850 | 3900 |
| YBPT3 250 | 3650 | 2950 | 4400 | 3600 | 5350 | 4350 | 5700 | 4700 |
| YBPT3 280 | 3350 | 2800 | 8700 | 7200 | 10800 | 8900 | 11900 | 9850 |
| YBPT3 315 | 3950 | 3350 | 9900 | 8100 | 12100 | 9900 | 13300 | 10900 |
| YBPT3 355 | 4250 | 3750 | 10300 | 9000 | 13000 | 11000 | 14400 | 12000 |

13 密封圈

轴转动部分采用 TLA 型轴面油封进行密封防护，轴面油封示意（见图 24），主要尺寸(见表 13)。

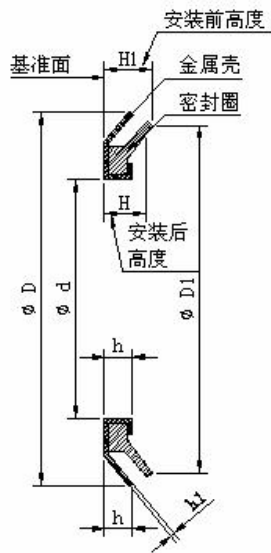


图 24 轴面油封示意图

表 13 轴面油封规格

| 产品型号 | 轴面油封规格 | |
|------------------|-----------|-----------|
| | 轴伸端 | 非轴伸端 |
| YBPT3 80 | TLA0020BF | TLA0020BF |
| YBPT3 90 | TLA0025BF | TLA0025BF |
| YBPT3 100 | TLA0030BF | TLA0030BF |
| YBPT3 112 | TLA0030BF | TLA0030BF |
| YBPT3 132 | TLA0040BF | TLA0040BF |
| YBPT3 160 | TLA0045BF | TLA0045BF |
| YBPT3 180 | TLA0055BF | TLA0055BF |
| YBPT3 200 | TLA0060BF | TLA0060BF |
| YBPT3 225 | TLA0065BF | TLA0065BF |
| YBPT3 250 | TLA0070BF | TLA0070BF |
| YBPT3 280(2P) | TLA0070BF | TLA0070BF |
| YBPT3 280(4~8P) | TLA0085BF | TLA0085BF |
| YBPT3 315(2P) | TLA0085BF | TLA0085BF |
| YBPT3 315(4~10P) | TLA0095BF | TLA0095BF |
| YBPT3 355(2P) | TLA0085BF | TLA0085BF |
| YBPT3 355(4~16P) | TLA0100BF | TLA0100BF |

注：非标准特殊供货电机、轴面油封根据电机上实际用轴面油封规格为准。

14 订货须知

订货时须注明电动机型号、极数、额定功率、额定电压、频率、安装结构型式、防爆标志、防护等级、接线盒进线方式（未注明进线方式默认为“橡套电缆进线”）与出线方式（一斗六端子或二斗六端子）等。

如需15kW、4P、380V、IMB3安装、防爆标志为ExdIIBT4、防护等级为IP55、橡套电缆进线、二斗六端子的电动机标注如下：

YBPT3 160L-4P 15kW、380V、50Hz、IMB3、ExdIIBT4、IP55、二斗六端子。

对电动机的噪声等级、防护等级、轴承注排油结构、旋转方向、特殊环境等有特殊要求时，须在订货合同上注明。

本样本的技术数据允许有变动。

编制： 校对： 审核： 标准化： 审定： 批准：
 发放单位： 产品开发部：2 工艺部：1 标准化：1 市场部：1 外贸部：1

电话：15945885946

网址：www.jmsfbmotor.com

邮箱：jmsfb_motor@163.com

地址：黑龙江省佳木斯市东风区光复东路428号